



TRAXON | e:cue
MEMBER OF PROSPERITY GROUP



AM430280035

e:cue SYMPL Core Sp Information for Use

Read the Information for Use and the Safety Instructions carefully. Subject to modification without prior notice. Typographical and other errors do not justify any claim for damages. Modification of the product is prohibited. This document is designed for electricians, system administrators, and product users. All product names and trademarks mentioned in this manual are trademarks of their respective owners. Except for internal use, relinquishment of the instructions to a third party, duplication in any type or form - also extracts - as well as exploitation and / or communication of the contents is not permitted.

Downloads and more information at:
www.ecue.com

Edition:
07.03.23 [EN_SYMPL_CoreSp_Setup_v2p0]

Published by:
Traxon Technologies Europe GmbH
Karl-Schurz-Strasse 38
33100 Paderborn, Germany

©2023 Traxon Technologies Europe GmbH
All rights reserved

Traxon Technologies Europe GmbH
Sales Operations
Karl-Schurz-Str. 38
33100 Paderborn, Germany
+49 5251 54648-0
support@ecue.com

Table of Contents

1.	Safety instructions	03
1.1	Symbols	03
1.2	General safety instructions	03
2.	General device description	03
2.1	System overview	04
2.2	Delivery content	04
2.3	Product specifications	05
2.4	Connectors and interfaces	05
2.5	User interface: LEDs	06
2.6	Identify button: Identification & Reset & Update	06
3.	General remarks	06
3.1	Transport	06
3.2	Unpacking	07
3.3	Warranty regulations	07
3.4	Maintenance and Repair	07
3.5	Disposal	07
3.6	Support	07
4.	Installation	07
4.1	Installation conditions	08
4.2	Mounting process	08
4.3	Ethernet connection	08
4.4	Power supply	08
5.	Network configuration	09
5.1	Default network properties	09
5.2	Network configuration with SYMPHOLIGHT	09
5.3	Network configuration with the web interface	10
6.	Restart	10
7.	Firmware Update	11
7.1	Update via web interface (from v5.2 or newer)	11
7.2	Update with a USB flash drive (from v5.2 or newer)	12
7.3	Update with a USB flash drive (from older version than v5.2)	13
7.4	Update via microSD card (from any version)	16
8.	Dismounting	18
9.	Certifications	19
10.	Dimensions	20

1. Safety instructions

Please read the safety instructions, provided in a separate manual, carefully. Make sure that the environmental, mounting, and installation prerequisites are met. This manual should be kept at a safe place and in reach of the device.

1.1 Symbols



The exclamation mark warns about possible damage of the device itself, to connected devices, and to the user.



The information symbol gives general hints and informs about handling and procedures for use of the device.

1.2 General safety instructions



- The device must be supplied by a separate certified SELV Class 2 power supply.
- The maximum length of each connected cable is 30 m.
- The Ethernet port of the SYMPL Node is not designed for inter-building connections with power and lighting transients. Use only intra-building networks to connect the SYMPL Nodes and Cores.



If safety instructions are missing, please contact Traxon e:cue to receive a new copy.

2. General device description

e:cue SYMPL Nodes are a system of interfaces for e:cue SYMPHOLIGHT only. They provide various connection types like DMX512, DALI, digital inputs and outputs etc. SYMPL Nodes always operate in online mode, as a device interface for SYMPHOLIGHT. All interactions are initiated and controlled by SYMPHOLIGHT. Connections between servers, Cores and Nodes are always made with e:net via Ethernet.

e:cue SYMPL Core Sp is a stand-alone engine for e:cue SYMPHOLIGHT with SYMPL Nodes as interfaces. It executes SYMPHOLIGHT projects in small to medium-sized projects and controls all available SYMPL Nodes. As a user interface it utilizes the Action Pad of SYMPHOLIGHT with all usual web browsers. The connection between SYMPL Core Sp, external systems and the Nodes is a standard Ethernet network. Projects can be transferred to the SYMPL Core Sp from a SYMPHOLIGHT server or via its web interface. Numerous settings and actions can be accessed via the web interface. The SYMPL Core Sp can be powered by an external power supply or via Power-over-Ethernet.

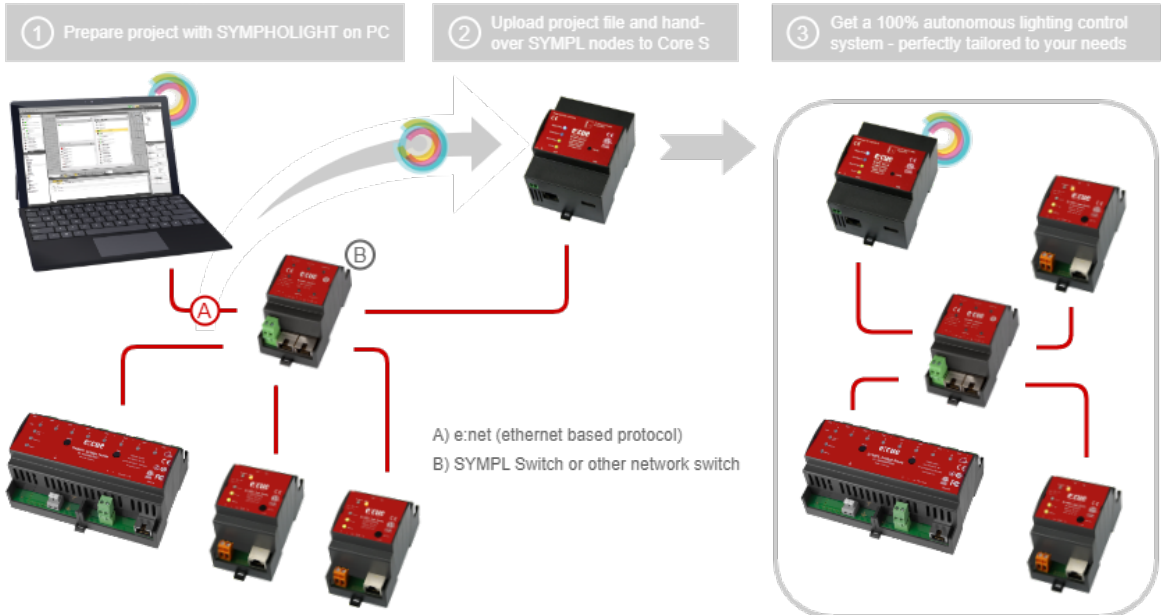
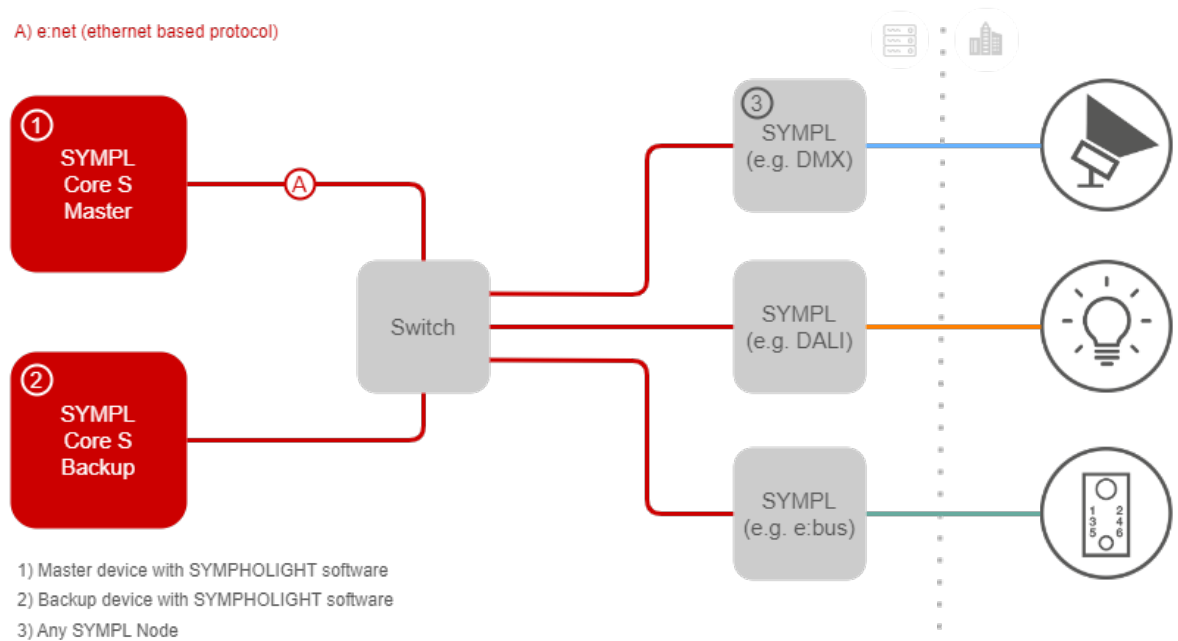


- To operate SYMPL Nodes a SYMPHOLIGHT version 2.0 or higher is mandatory. Earlier versions do not support the SYMPL Nodes. SYMPL Nodes are not supported by the e:cue Lighting Application Suite.
- e:cue SYMPL Core Sp is not hot-pluggable.



2.1 System overview

A) e:net (ethernet based protocol)



2.2 Delivery content

Delivery content for the e:cue SYMPL Core Sp (AM430280035):

1. e:cue SYMPL Core Sp
2. Safety instructions
3. Welcome note

2.3 Product specifications

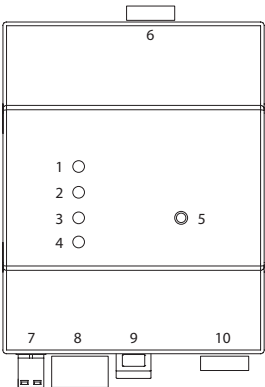
Product number	AM430280035
Dimensions (W x H x D)	71.5 x 90.5 x 62 mm / 2.81 x 3.56 x 2.44 in (excl. fastening clip)
Weight	170 g / 0.37 lb
Power supply input	24 ... 48 V DC on terminal plug wire gauge: 0.25 ... 1.5 sqmm, (0.5 sqmm for flexible wires with ferrules) or PoE IEEE 802.3af on RJ45
Power consumption	max. 12 W incl. external USB load
Operating temperature	-20 ... 40 °C / -4 ... 104 °F
Storage temperature	-20 ... 70 °C / -4 ... 158 °F
Operating / storage humidity	0 ... 80% RH, non-condensing
Protection class	IP20
Installation	Indoor installation only, intra building connections only
Housing	Self extinguishing blend PC/ABS, UL E140692
Mounting	on 35 mm DIN rail (EN 60715), or with key hole on any stable vertical surface
Certificates	CE, RoHS, FCC, UKCA, ETL

Interface specifications

User interfaces	4 LEDs (Master/Slave, Error/Status, Ethernet, Power) Identify button Web interface
System interfaces	1 x ethernet 10/100 Mbit/s, RJ45 CAT shielded, for e:net and PoE (galvanically not isolated) USB 2.0 Type A
Mass Memory	microSD card

2.4 Connectors and interfaces

View from top



- | | |
|----|---|
| 1 | Master / Slave LED |
| 2 | Error / Status LED |
| 3 | Ethernet link LED (e:net, LAN activity) |
| 4 | Power LED |
| 5 | Identify button |
| 6 | micro SD card slot |
| 7 | Power supply
(V-, V+ left to right) |
| 8 | e:net / Ethernet |
| 9 | DIN rail handle |
| 10 | USB 2.0 socket |

2.5 User interface: LEDs

The SYMPL Core Sp has four LEDs. The four LEDs show the basic states of the SYMPL Core Sp.

LEDs

Master/ Slave	Blue: This SYMPL Core Sp is master in a master/slave group. Yellow: This SYMPL Core Sp is a slave in a master/slave group.
Error/ Status	Green: Signals system activity. Orange: System load reaches 100%. Red: A system error occurred. Restart the system by disconnecting the power supply. If the error persists, contact Traxon e:cue Service.
Ethernet link	Off: No network connection available. On: If constantly alight, network connection available. Flashing: Data traffic over network.
Power	On: Device is in operation.

2.6 Identify button: Identification & Reset & Update

The Identify button has three functions: to send an Identify message (A), to reset the SYMPL Core Sp (B), and to update the firmware of the SYMPL Core Sp (C).

(A) A short press during operation in online mode sends an Identify message to the server. This helps to assign the SYMPL Core Sp in the Layout in SYMPHOLIGHT.

(B) The Identify button can also be used to reset the device to factory state or to stay in bootloader mode:

- Keep the Identify button pressed while powering up, Master / Slave and Error / Status LEDs light up at first. Bootloader mode is signaled by a fast blinking Error / Status LED. Release the button now. The device stays in bootloader mode to download a new firmware.
To exit the bootloader mode, short press the Identify button again.
- Press the Identify button until Master / Slave and Error / Status LEDs blink alternating, then blink together. Releasing the button now resets the device to its factory settings. The password and other settings are reset to their default values.
- Keeping the button pressed further on, the device proceeds to normal operation. No changes apply. When Master/Slave LED of SYMPL Core Sp lights in blue or yellow, the device has booted and is operational.

(C) The Identify button is also part of the firmware update process using an USB memory stick. See [„7.2 Update with a USB flash drive \(from v5.2 or newer\)“ on page 12](#) or [„7.3 Update with a USB flash drive \(from older version than v5.2\)“ on page 13](#) for further information.

3. General remarks

3.1 Transport

Only transport the device in its original packaging. This protects the device from damage.

3.2 Unpacking

Only unpack the e:cue SYMPL Core Sp at its installation location. To protect the device against condensation water, unpack it and wait until all moisture remaining in the device has evaporated. Condensation can occur when the device is moved from a cold to a warm location. Keep the packaging for use in case of further transport. Inspect all parts for completeness regarding chapter „“ on page 04. If there is apparent damage to the device or parts are missing from the delivery scope, please contact the Traxon e:cue Support service.

3.3 Warranty regulations

Depending on the product, warranty regulations are of different duration. The warranty time is usually noted in the quote and in the order confirmation. See www.traxon-ecue.com/terms-and-conditions for details. Legal warranty regulations apply in any case.

3.4 Maintenance and Repair

This device requires no maintenance.



- Before dismounting, appropriate measures must be taken to protect the respective components against damage caused by electrostatic discharge (ESD protection).
- Do not try to repair the device. Return it to your Traxon e:cue distributor for replacement or repair.

3.5 Disposal



Batteries and technical appliances must not be disposed of with domestic waste, but should be handed in at the appropriate collection and disposal points.

The proper disposal of packing materials and of the device is the responsibility of the respective user and for his account; in all other matters, the retrieval obligation for packing materials and the device is subject to the statutory regulations.

3.6 Support

In case of technical problems or questions regarding installation and repair please contact:

Traxon Technologies Europe GmbH
Customer Service
Karl-Schurz-Str. 38
33100 Paderborn, Germany
+49 (5251) 54648-0
support@ecue.com

4. Installation



- Connect cables and data only when the device is powered down.
- Each cable should not exceed a length of 30 m.
- If safety instructions are missing, please contact Traxon e:cue to receive a new copy.

The installation of the SYMPL Core Sp consists of mounting the device, connections to e:net, and to power

supply.

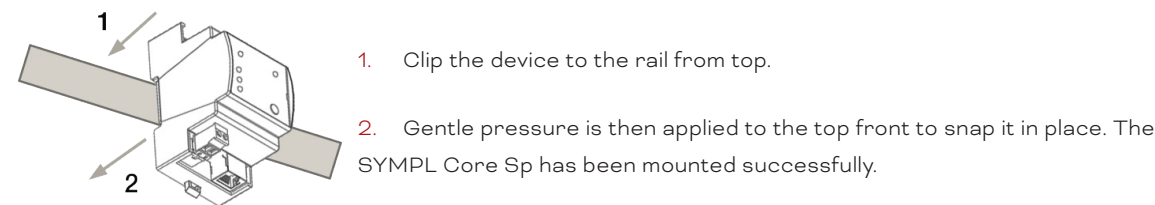
The sequence of cabling is not defined. Supply the SYMPL Core Sp with power after all cabling is completed; it starts booting.

4.1 Installation conditions

Installation position	Terminals on top and bottom
Horizontal spacing	No spacing necessary
Minimum vertical rail grid spacing	115 mm (90 + 25 mm) (excluding conduit)
Recommended vertical rail grid spacing	160 mm (with 40 mm conduit)
Installation location	Indoor

4.2 Mounting process

The e:cue SYMPL Core Sp is designed to mount onto a 35 mm DIN rail (EN 60715) in a vertical position.



You can also mount the e:cue SYMPL Core Sp on any flat vertical surface. Use a 3 to 3.5 mm screw for the hanger hole.



For mechanical stability, mounting on a rail is recommended.

4.3 Ethernet connection



- The Ethernet port of the SYMPL Node is not designed for inter-building connections with power and lighting transients. Use only intra-building networks to connect the SYMPL Nodes and Cores.
- Never connect more than one SYMPL Node in factory state to a network. The identical IP addresses will conflict and disturb proper communication.

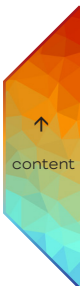
The pin-assignment of the Ethernet port corresponds to RJ45 standards. You can use every common Ethernet component, like cable, splitters, and switches. Connect the SYMPL Core Sp at the designated Ethernet interface with a patch cable (RJ45, CAT5).

4.4 Power supply

The e:cue SYMPL Core Sp can be powered by an external power supply or via Power-over-Ethernet.



It is not recommended to have PoE and external power supply connected at the same time. Only use one option.



PoE:

For PoE, simply connect an Ethernet connection from a power sourcing device.



Use unshielded cables when several SYMPL Core Sp are operated via the same PoE switch.

External power supply:

Use a separate certified SELV Class 2 power supply unit in the control cabinet for supplying 24 ... 48 V DC to the SYMPL Core Sp.

Connect the SYMPL Core Sp to a certified NEC Class 2 24 ... 48 V DC power supply unit. Present power supply equates to the status “On” or running of the SYMPL Node.

To connect the device to a power supply unit, use the provided 2-pole terminal and lay the wires as stated on the front label. The voltage assignment is left V- and right V+.

Turn the power on when all cables are connected to the SYMPL Core Sp. The device starts booting. The device has finished booting and is in operation when the LED Error / Status is flashing.

5. Network configuration

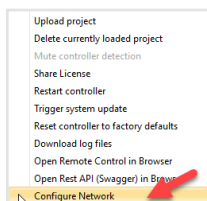
The network properties of the SYMPL Core Sp are preconfigured. The successful installation of the power supply is required for changing the network configuration. You can either adjust the network settings with SYMPHOLIGHT or using the web interface of the SYMPL Core Sp. Via the web interface numerous settings and actions can be accessed as well.

5.1 Default network properties

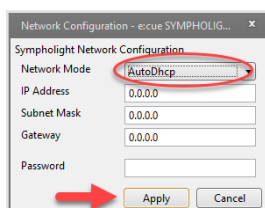
The SYMPL Core Sp default IP address is 192.168.123.100/24, if available. An active external DHCP server has precedence. The fallback to a random IP in the 192.168.123.0/24 subnet is used as a last resort.

5.2 Network configuration with SYMPHOLIGHT

1. Open the context menu of the SYMPL Core Sp in the Setup tab of SYMPHOLIGHT by a right-click on the device.
2. Select “Configure Network”:



3. Define the Network Mode (DHCP settings), the IP address, and the subnet mask to your needs:



4. Enter the password for the SYMPL Core Sp and click “Apply” to submit the changes.

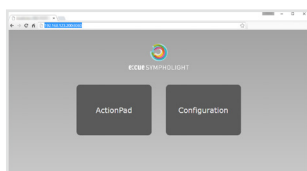
The network configuration of the SYMPL Core Sp is completed.

5.3 Network configuration with the web interface

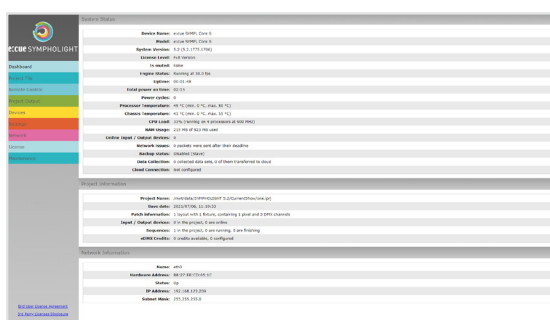
1. Open a common web browser on a connected PC. Enter the SYMPL Core Sp's IP address into the address bar:

e.g. `http://192.168.123.1`

The remote console of the SYMPL Core Sp is displayed:



2. Select "Configuration" and the dashboard of the SYMPL Core Sp is displayed:



On first access, define your login credentials for the web interface of the SYMPL Core Sp under “Settings”.

3. Define the network settings at “Network” to your needs.
4. Click “Apply” to apply the settings.

The network configuration of the SYMPL Core Sp is completed.



- Note down all employed and, if applicable, reserved IP addresses. Keep the information for future network configurations.
- You can change the login password to the SYMPL Core Sp's configuration page and the device name of the SYMPL Core Sp at “Settings” page. Do not forget the new password.

6. Restart

To restart the SYMPL Core Sp, use the Restart button in the web interface of the SYMPL Core Sp. It is located at the “Maintenance” page.



Restart via power disconnection should be the exception. The device is designed for continuous operation. Frequent disconnection may cause the internal clock to become misaligned and the SD card to become damaged.

7. Firmware Update

The e:cue SYMPL Core Sp runs on an integrated firmware. The firmware is a specific SYMPHOLIGHT application.



It is recommended to update the firmware whenever a newer version is available.

Depending on the installed firmware version, there are different ways to update the firmware:

1. Update via web interface (from v5.2 or newer) - see [page 11](#).
2. Update with a USB flash drive (from v5.2 or newer) - see [page 12](#).
3. Update with a USB flash drive (from older version than v5.2) - see [page 13](#).
4. Update via microSD card (from any version, last resort) - see [page 16](#).



When SYMPHOLIGHT v5.2 or newer is already running without errors on the SYMPL Core Sp, it is recommended to update via the web interface.

7.1 Update via web interface (from v5.2 or newer)

Update a SYMPL Core Sp remotely using its web interface. This update way applies to devices with an installed SYMPHOLIGHT v5.2 or newer. The configuration, i.e. the settings, the SYMPHOLIGHT project file, and any media files, is preserved.

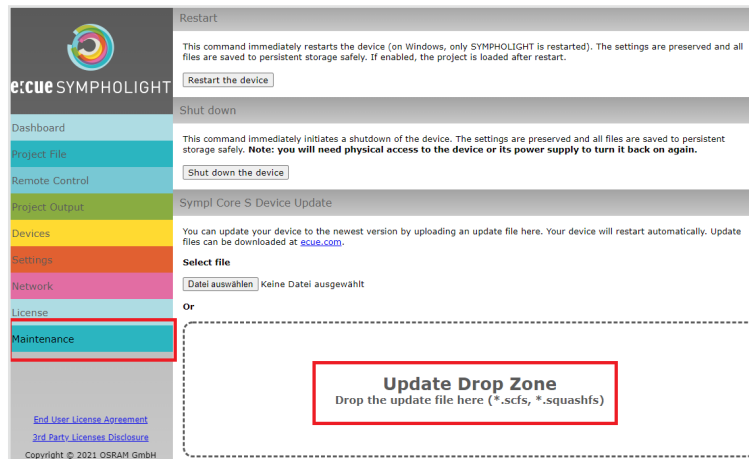
7.1.1 Prerequisites

- A computer with internet access and a supported web browser. Supported web browsers are: Google Chrome, Microsoft Edge, Mozilla Firefox, Safari.
- A stable network access of the computer to the SYMPL Core Sp. It is recommended to use a wired network connection.
- The SYMPL Core Sp is running.
- On the SYMPL Core Sp an installed SYMPHOLIGHT v5.2 or newer.
- The password to the web interface of the SYMPL Core Sp is set.

7.1.2 How to perform the update

1. Download the new update file from www.ecue.com to the computer. The update file has the extension *.scfs and contains the new firmware.
2. Connect the computer to the same network as the SYMPL Core Sp.
3. Open the web interface of the SYMPL Core Sp.
4. Open the "Maintenance" page.
5. Drag and drop the update file onto the "Update Drop Zone".





The update process starts. It will take some minutes, indicated by a progress bar.

- i** – Do not leave or refresh the “Maintenance” page or hide the SYMPL Core Sp browser tab while the update is in progress. This will lead to an incomplete update.
- In case of an upload error, try the update again from [step 4](#) onwards **without restarting** the SYMPL Core Sp.

At the end of the update process, the SYMPL Core Sp restarts and resumes normal operation. When the Master/Slave LED of SYMPL Core Sp lights in blue, the device has restarted and is operational. The update is now completed.

- i** Do not interrupt restart processes. This will lead to an incomplete update. Wait until the SYMPL Core Sp resumes normal operation.

7.1.3 Troubleshooting

If the SYMPL Core Sp does not restart properly after the update, try the other update options: First try „[7.2 Update with a USB flash drive \(from v5.2 or newer\)](#)“ on page 12. As a last resort try „[7.4 Update via microSD card \(from any version\)](#)“ on page 16.

7.2 Update with a USB flash drive (from v5.2 or newer)

Update a SYMPL Core Sp using a USB flash drive. This update way applies to devices with an installed SYMPHOLIGHT v5.2 or newer. The configuration, i.e. the settings, the SYMPHOLIGHT project file, and any media files, is preserved.

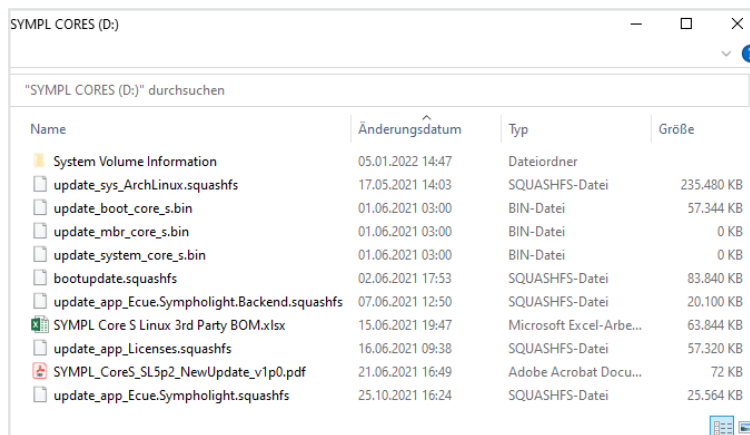
7.2.1 Prerequisites

- A computer with internet access and USB port.
- On the SYMPL Core Sp an installed SYMPHOLIGHT v5.2 or newer.
- A USB flash drive with min. 4 GB storage capacity and file system FAT32, NTFS or exFAT.

7.2.2 How to perform the update

1. Connect the USB flash drive to the computer.
2. Download the new update ZIP file from www.ecue.com to the computer. The update ZIP file contains the new firmware.
3. Unzip the update file.

4. Copy all unzipped files to the root directory of the USB flash drive.



5. Use “Safely Remove Hardware and Eject Media” from the Windows task bar or “Eject” for Macs.
6. Unplug the USB flash drive from the computer.
7. Power off the SYMPL Core Sp.
8. Insert the USB flash drive into the SYMPL Core Sp.
9. Keep the Identify button pressed while powering the SYMPL Core Sp up.
10. After ca. 7 seconds, the top two LEDs (“Master/Slave” in blue and “Error/Status” in green) will blink alternately. Release the Identify button now. The update process starts, it will take 5-10 minutes.



Do not release the Identify button while the LEDs are blinking simultaneously. This resets the SYMPL Core Sp to its factory settings. To continue without a reset, keep the button pressed until the LEDs and the SYMPL Core Sp are back to normal operation. Resume the update process with [step 9](#).

At the end of the update process, the SYMPL Core Sp restarts and resumes normal operation. When the Master/Slave LED of SYMPL Core Sp lights in blue, the device has restarted and is operational. The update is now completed.



Do not interrupt restart processes. This will lead to an incomplete update. Wait until the SYMPL Core Sp resumes normal operation.

7.2.3 Troubleshooting

In case the update failed, try [„7.4 Update via microSD card \(from any version\)”](#) on page 16.

7.3 Update with a USB flash drive (from older version than v5.2)

Update a SYMPL Core S using a USB flash drive. This update way applies to devices with an installed SYMPHOLIGHT version v5.1SR1 or older.

- i** The settings and SYMPHOLIGHT project file on the SYMPL Core S will be deleted in the update process. For their recreation after the update („7.3.3 How to restore the previous configuration“ on page 15), download the current project file from the SYMPL Core S to a computer and make screenshots from the Dashboard, Settings and Network pages before performing the update.

7.3.1 Prerequisites

- A computer with internet access and USB port.
- On the SYMPL Core S an installed SYMPHOLIGHT v5.1SR1 or older.
- A USB flash drive with min. 4 GB storage capacity.

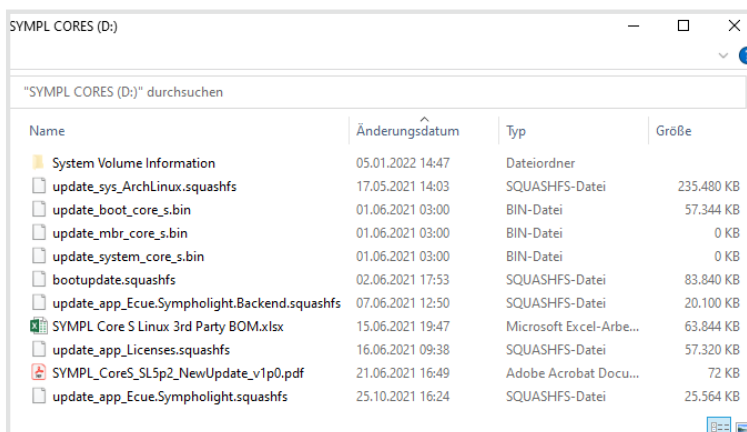
- i**
- The recommended maximum storage capacity of the USB flash drive is 32 GB. Windows does not format USB flash drives larger than 32 GB with FAT32. For a USB flash drive larger than 32 GB try another formatting tool like the “HP USB Disk Storage Format Tool”.
 - The USB flash drive will be formatted during the update process. All previous data on the USB flash drive will be erased. Hence, it is recommended to backup the data of the USB flash drive.

7.3.2 How to perform the update

1. Connect the USB flash drive to the computer.
2. Format the USB flash drive. Select the FAT32 file system.

- i** Formatting will irreversibly erase all data on the USB flash drive.

3. Download the new update ZIP file from www.ecue.com to the computer. The update ZIP file contains the new firmware.
4. Unzip the update file.
5. Copy all unzipped files to the root directory of the USB flash drive.



6. Use “Safely Remove Hardware and Eject Media” from the Windows task bar or “Eject” for Macs.
7. Unplug the USB flash drive from the computer.
8. Power off the SYMPL Core S.
9. Insert the USB flash drive into the SYMPL Core S.
10. Hold the Identify button pressed while powering the SYMPL Core S up.
11. After ca. 7 seconds, the top two LEDs (“Master/Slave” in blue and “Error/Status” in green) will blink alternately. Release the Identify button now. The update process starts, it will take 5-10 minutes.



Do not release the Identify button while the LEDs are blinking simultaneously. This resets the SYMPL Core S to its factory settings. To continue without a reset, keep the button pressed until the LEDs and the SYMPL Core S are back to normal operation. Resume the update process with [step 10](#).

The SYMPL Core S restarts several times during this update process. At the end of the update process, the SYMPL Core S resumes normal operation. When the Master/Slave LED of SYMPL Core S lights in blue, the device has restarted and is operational. The update is now completed.



After the update, the SYMPL Core S's AutoDHCP mode is active: If an external DHCP server is available in the network, it assigns a network configuration to the SYMPL Core S. If no external DHCP server is available, an internal DHCP server starts using the network 192.168.123.0 and subnet mask 255.255.255.0. The SYMPL Core S assigns itself a free random IP address in that subnet. You may have to configure your computer to DHCP or automatically obtain an IP address.

When the network is set up correctly, the SYMPL Core S will show up in SYMPHOLIGHT.

When using a statically configured network (i.e. one without an external DHCP server), you can now configure the SYMPL Core S network settings.

Remember to reconfigure the computer network settings again, where applicable.

7.3.3 How to restore the previous configuration

In order to restore the previous configuration of the SYMPL Core Sp consider the following prerequisites:

- A computer with a supported web browser. Supported web browsers are: Google Chrome, Microsoft Edge, Mozilla Firefox, Safari.
- A stable network access to the SYMPL Core Sp. It is recommended to use a wired network connection.
- The downloaded project file and screenshots (see [information above](#)).

To restore the previous configuration:

1. Make sure the computer is connected to the same network as the SYMPL Core S.



2. Start SYMPHOLIGHT on the computer.
3. Wait until the SYMPL Core S appears in the “Setup” window → “Sympholights” tab.
4. Right-click on the SYMPL Core S and select “Open Remote Control in Browser”.
5. In the web interface, set the password, then authenticate and change the settings in accordance with the screenshots.
6. Upload the downloaded project file.

The previous configuration is now restored on the SYMPL Core S.

7.3.4 Troubleshooting

In case the update failed, try [„7.4 Update via microSD card \(from any version\)“](#) on page 16.

7.4 Update via microSD card (from any version)

Update a SYMPL Core Sp using the microSD card. This update way applies to all SYMPL Core Sp with any installed SYMPHOLIGHT version. Use this as a last resort in case of failed updates using the regular update ways or when there is reasonable suspicion that the SYMPL Core Sp does not operate properly.



The settings and project file on the SYMPL Core Sp will be deleted in the update process.

To restore the SYMPHOLIGHT project file and other settings after the update ([„7.4.3 How to restore the previous project file“](#) on page 18):

- Try to access the web interface of the SYMPL Core Sp. Make screenshots from the Dashboard, Settings and Network pages. Download the current SYMPHOLIGHT project file.
- When the web interface is not accessible, save the current project file during the update performance, see [information at step 3](#).

7.4.1 Prerequisites

- A computer with a microSD HC card reader.

7.4.2 How to perform the update

1. Power off the SYMPL Core Sp.
2. Unplug the microSD card from the SYMPL Core Sp.



The SD card slots at the SYMPL Core S and the Core Sp are different:

- To unplug the SD card from the Core S, the card must be pressed, then it will eject.
- To unplug the SD card of the Core Sp, the card must be pulled, there is no ejection mechanism.

3. Insert the card into the microSD card reader of the computer.





- To restore the SYMPHOLIGHT project file after the update, save the project file from the microSD card to the computer. The project file is in the folder “\data\SYMPHOLIGHT X\CurrentShow”.
- If you are updating because the SYMPL Core Sp encounters problems, please make a backup of the “\data\logs” folder if possible and send it to support@ecue.com to help improving the system.

4. Format the microSD card.



The SD Association provides a formatting tool for Windows and Mac, see <https://www.sdcard.org/downloads/formatter/>

5. Download the new update ZIP file from www.ecue.com to the computer. The update ZIP file contains the new firmware.
6. Unzip the update file.
7. Copy all unzipped files to the root directory of the microSD card.



Do not copy the folder containing the files. Copy all files from within the folder.

8. Use “Safely Remove Hardware and Eject Media” from the Windows task bar or “Eject” for Macs.
9. Unplug the microSD card from the computer.
10. Insert the microSD card into the SYMPL Core Sp.
11. Power on the SYMPL Core Sp.

When the Master/Slave LED of SYMPL Core Sp lights in blue, the device has started and is operational. The update is now completed.



After the update, the SYMPL Core Sp's AutoDHCP mode is active: If an external DHCP server is available in the network, it assigns a network configuration to the SYMPL Core Sp. If no external DHCP server is available, an internal DHCP server starts using the network 192.168.123.0 and subnet mask 255.255.255.0. The SYMPL Core Sp assigns itself a free random IP address in that subnet. You may have to configure your computer to DHCP or automatically obtain an IP address.

When the network is set up correctly, the SYMPL Core Sp will show up in SYMPHOLIGHT.

When using a statically configured network (i.e. one without an external DHCP server), you can now configure the SYMPL Core Sp network settings.

Remember to reconfigure the computer network settings again, where applicable.



7.4.3 How to restore the previous project file

In order to restore the previous project file of the SYMPL Core Sp consider the following prerequisites:

- A computer with a supported web browser. Supported web browsers are: Google Chrome, Microsoft Edge, Mozilla Firefox, Safari.
- A stable network access to the SYMPL Core Sp. It is recommended to use a wired network connection.
- The saved project file, see [information at step 3](#), and, where available, the screenshots of the web interface.

To restore the previous configuration:

1. Make sure the computer is connected to the same network as the SYMPL Core Sp.
2. Start SYMPHOLIGHT on the computer.
3. Wait until the SYMPL Core Sp appears in the “Setup” window → “Sympholights” tab.
4. Right-click on the SYMPL Core Sp and select “Open Remote Control in Browser”.
5. In the web interface, set the password, then authenticate and configure the SYMPL Core Sp. Refer to the screenshots, where available.
6. Upload the saved project file.

The previous configuration is now restored on the SYMPL Core Sp.

7.4.4 Troubleshooting

If the SYMPL Core Sp still does not operate properly after updating via microSD card, the microSD card could be defective. Retry the update with a different microSD card. Any standard microSD HC card with 8 ... 32 GB should work - no guarantee. You can also contact your local e:cue partner or the e:cue support to receive a replacement microSD card.

If the problems persist after trying the update with a different microSD card, please contact support@ecue.com.

8. Dismounting



Before dismounting, appropriate measures must be taken to protect the respective components against damage caused by electrostatic discharge (ESD protection).

Disconnect all attached cables. Dismount the e:cue SYMPL Core Sp from the rail by pulling the black DIN rail handle and unhitching the SYMPL Core Sp. The dismounting is completed.



9. Certifications



Conforms to ANSI/UL Std. 62368-1

Certified to CSA Std. C22.2 NO. 62368-1



This equipment has been tested and found to comply with the limits for a Class B digital device, pursuant to part 15 of the FCC Rules.

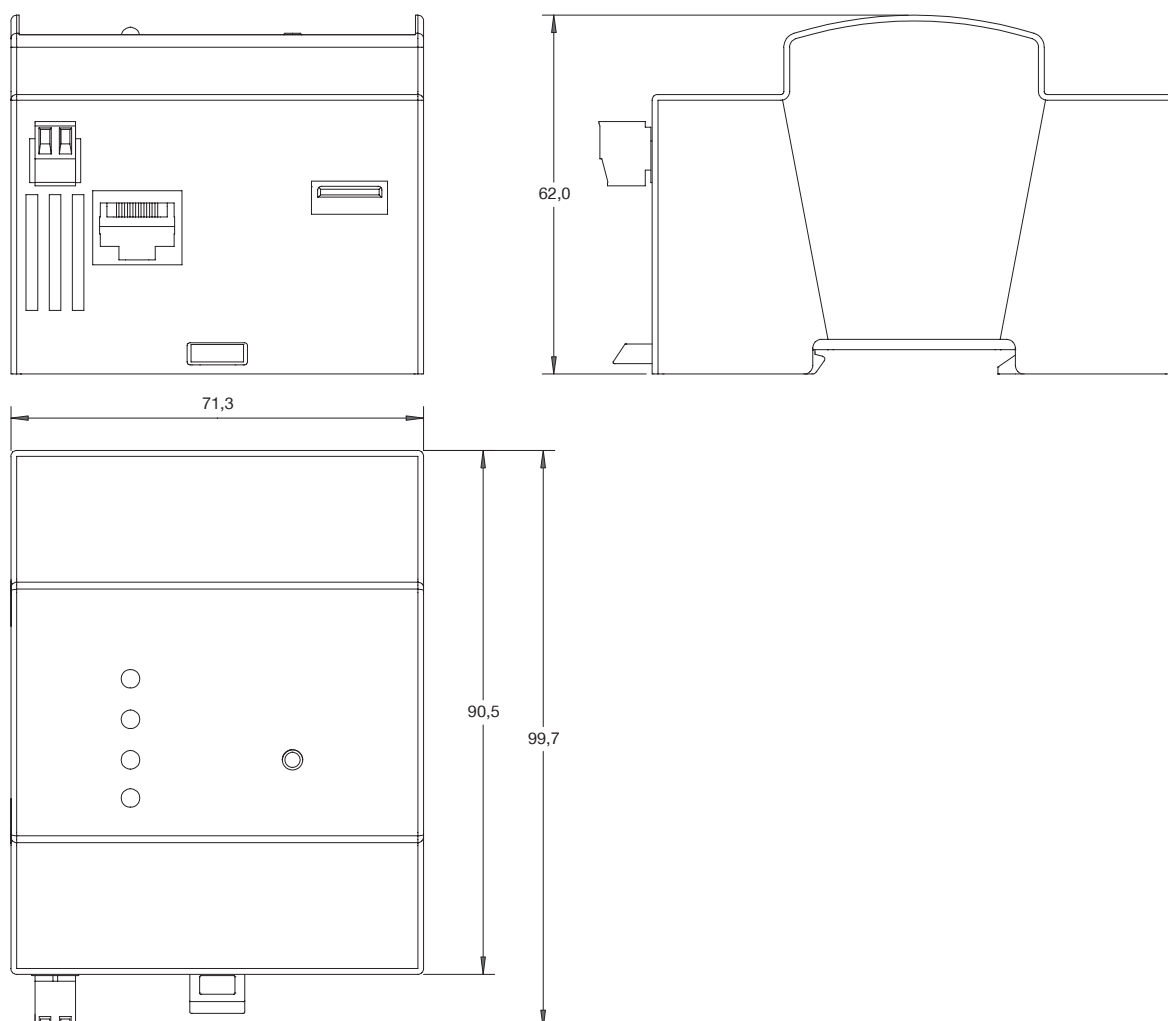
These limits are designed to provide reasonable protection against harmful interference in a residential installation. This equipment generates, uses and can radiate radio frequency energy and, if not installed and used in accordance with the instructions, may cause harmful interference to radio communications. However, there is no guarantee that interference will not occur in a particular installation. If this equipment does cause harmful interference to radio or television reception, which can be determined by turning the equipment off and on, the user is encouraged to try to correct the interference by one or more of the following measures:

- Reorient or relocate the receiving antenna.
- Increase the separation between the equipment and receiver.
- Connect the equipment into an outlet on a circuit different from that to which the receiver is connected.
- Consult the dealer or an experienced radio/TV technician for help.



10. Dimensions

All dimensions in mm



ecue

Please check for the latest updates and changes on the Traxon website.

© 2023 TRAXON TECHNOLOGIES. ALL RIGHTS RESERVED.

www.traxon-ecue.com



TRAXON | ecue
MEMBER OF PROSPERITY GROUP