

## 16PXL Strip RGB 2.0

The Traxon 16PXL Strip RGB 2.0 features 16 individually calibrated, controllable ultra bright SMT LEDs on a 16 x 1 array with a 31.25mm pitch. Example use cases include architecture (highlights on walls, floors, counters, decoration elements) in backlighting for light boxes or stretch ceilings and in light panels and to create impact on trade fairs. The Strip can be used alongside the 16PXL Board RGB 2.0 and the 64PXL Board RGB 2.0. The Strip has a default length of 499mm and can be ordered in intervals of 31.25mm down to 240mm.



### Product Specifications

Light Source (LEDs)	16 - 8 SMT RGB LEDs (Individually Controllable)
Colour Range	16.7 Million additive RGB colors
Colour Resolution	3 x 16-bit (Gamma correction)
Beam Angle	115°
Luminous Flux	89 lm calibrated (16 LEDs)
Luminance Pitch	2048 cd/m <sup>2</sup> calibrated (31,25mm x 31,25mm)
LED Pitch	31.25mm / 1.23"
Efficacy	19 lm/W calibrated (16 LEDs)
Lumen Maintenance	L70 @ 25°C - 50'000hrs
Light Intensity	32 cd calibrated (1m distance)
Housing	PCB
Dimensions LxWxH	(max) 499mm x 15mm x 10mm - (min) 240mm x 15mm x 10mm (max) 19.65" x 0.59" x 0.39" - (min) 9.45" x 0.59" x 0.39"
Weight	0.04kg / 0.09 lbs.
Regulatory listing and safety approval	CE, UL
Operating Temperature	5°C to +40°C (41°F to +104°F)
Storage Temperature	5°C to +60°C (41°F to +140°F)
Environment	Indoor IP20
Humidity	0 to 90%, non-condensing
Color	Black
Cover	Open

### Electrical Specifications

Operating voltage	24V DC
Power Consumption (typical)	3.5W
Power Consumption (maximum)	8W

### System Specifications

Power/ Data Interface	TX Connect
Control	DMX / e:pix
Intensity dimming range	0-100%
Power Supply	100W 24V DC
Input Voltage	120 - 240 VAC, 50/60Hz
Addressing Options	Auto-Addressing

OSRAM GmbH, Karl-Schurz-Str. 38, 33100 Paderborn, Germany

# 16PXL Strip RGB 2.0

Photometrics

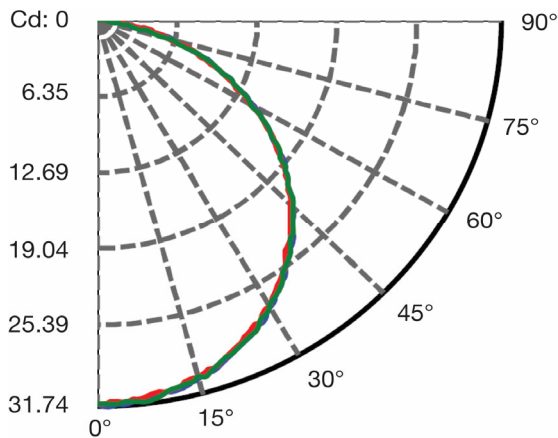
## Light Output

Color	Luminous Flux (lm)	Efficacy (lm/W)
White	90.89	25.96
Red	28.09	8.02
Green	57.52	16.43
Blue	8.26	2.36

## Illuminance

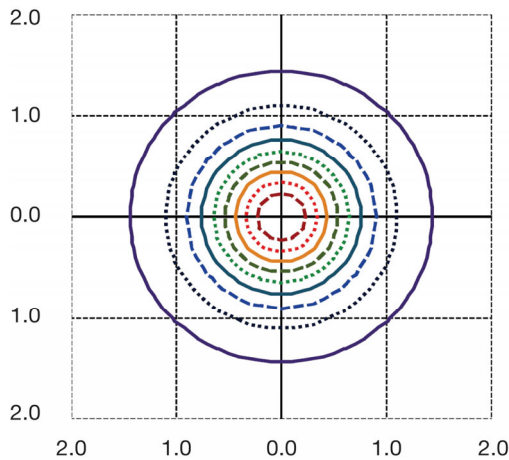
Distance	10cm	25cm	50cm	72cm	100cm
Lux	3163	506	126.5	61	31.6
50% lmax (diameter)	31cm	78cm	157cm	235cm	308cm

## Candela Distribution



Measured on: White  
Beam angle (50% lmax): 114°

## Illuminance at a Distance



ISO - Illuminance  
Unit: [lx]

Distance: 5.09 m

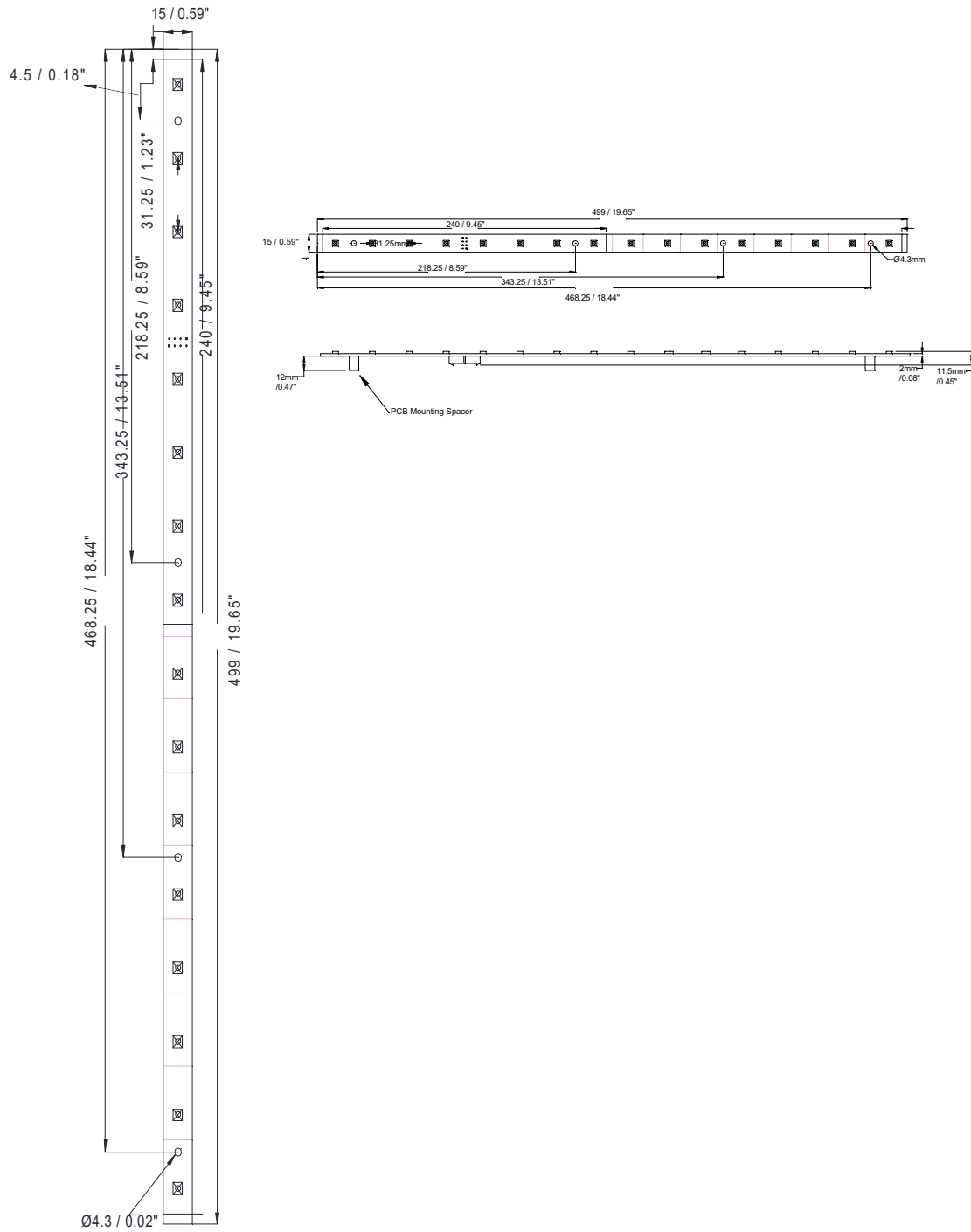
- 0.39 (100% Emax)
- 0.35 (90% Emax)
- 0.31 (80% Emax)
- 0.27 (70% Emax)
- 0.23 (60% Emax)
- 0.19 (50% Emax)
- 0.16 (40% Emax)
- 0.12 (30% Emax)
- 0.08 (20% Emax)
- 0.04 (10% Emax)

Coordinate scale: d/h

IES and LDT files are available for download from the Traxon website.

# 16PXL Strip RGB 2.0

Dimensions (in mm)

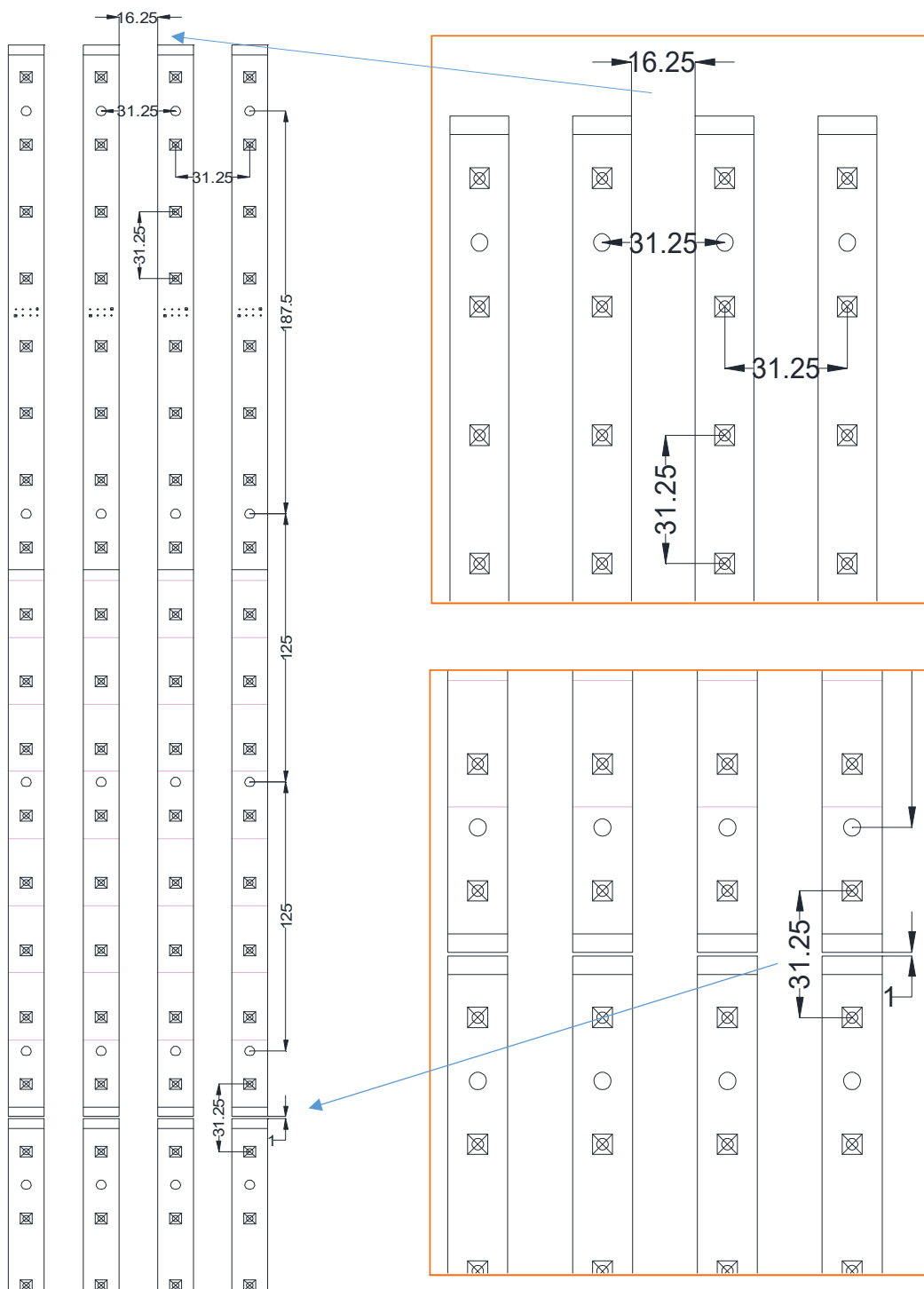


# 16PXL Strip RGB 2.0

# Mounting (dimensions in mm)

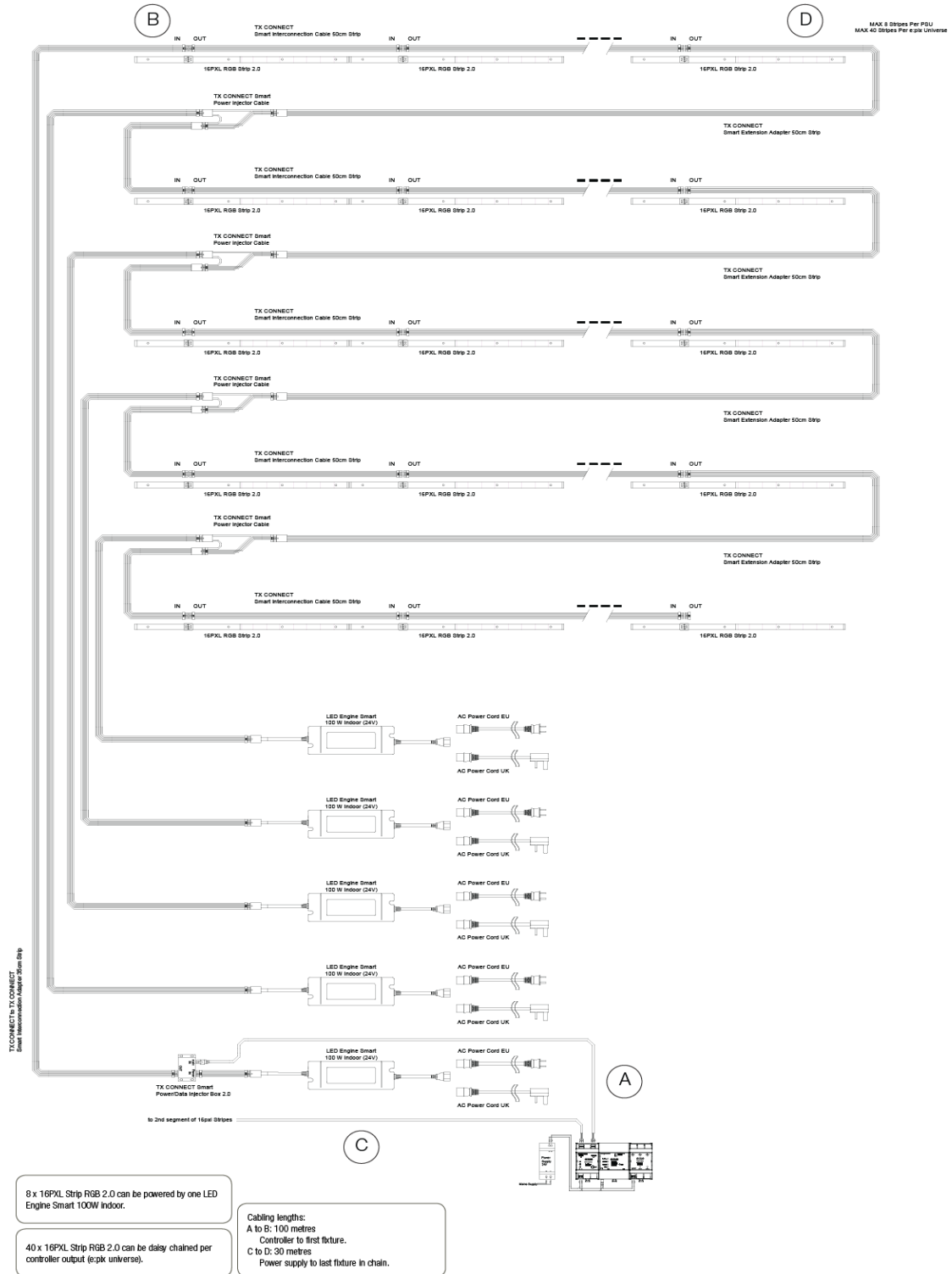
No conductive material with 1mm around LED boards.

## Mounting Multiple Strips



# 16PXL Strip RGB 2.0

# System Diagram



## 16PXL Strip RGB 2.0

Ordering

### Fixtures

Item Code	Description
AM250290035	16PXL Strip RGB 2.0
AM250270035	64PXL Board RGB 2.0
AM250280035	16PXL Board RGB 2.0

### Mouting Accessories

Item Code	Description
AM275740035	Board holder, punch version (1,5-2mm sheet metal, 5.5mm Hole), 12mm (100)
AM275750035	Board holder, drill version (wood; requires Hole D=8mm, >9mm deep), 12mm (100)

### Cables

Item Code	Description
AM308040035	TX CONNECT Smart Power/Data Injector Box 2.0 Mini
AA556380055	TX CONNECT Smart Power Injector cable
AM275760035	TX CONNECT Smart Interconnection cable 35cm Mini
AM275770035	TX CONNECT Smart Interconnection cable 50cm Micro
AM275780035	TX CONNECT Smart Interconnection Adapter cable 35cm Mini-Micro
AM308050035	TX CONNECT Smart Extension Adapter 50cm Micro-Mini
A63420F0055	TX CONNECT Smart Interconnection cable 30cm Mini
AA556360055	TX CONNECT Smart Interconnection cable 80cm Mini
A6342330055	TX CONNECT Smart Extension cable 1m Mini
A6342410055	TX CONNECT Smart Extension cable 3m Mini
AA580410055	TX CONNECT Smart Extension cable 5m Mini
A6342680055	TX CONNECT Smart Extension cable 10m Mini

### Power Supply

Item Code	Description
AA624090055	LED Engine Smart 100W Indoor (24V)
AA556290055	AC Power Cord, 2m/6,6ft (US)

## 16PXL Strip RGB 2.0

Ordering

### Controls

Item Code	Description
AB443930035	SYMPL e:pix Node
AB447060035	SYMPL Core S
AA629450035	LIGHTING CONTROL ENGINE 2
AA629460035	LIGHTING CONTROL ENGINE 2 fx
AA438940235	Video Micro Converter (DMX/e:pix)
AM313830035	SYMPL Switch with 5 x 10/100 with PoE

## 16 PXL Strip RGB 2.0

Image



### Our Brands

traxon e:cue

[www.traxontechnologies.com](http://www.traxontechnologies.com)  
[www.osram.us/traxon](http://www.osram.us/traxon)

# OSRAM

©2019 TRAXON TECHNOLOGIES - AN OSRAM BUSINESS. ALL RIGHTS RESERVED. TRAXON™ AND TX CONNECT® ARE TRADEMARKS OF TRAXON TECHNOLOGIES. U.S. PATENTS, E.U. PATENTS, JAPAN PATENTS, OTHER PATENTS PENDING. SPECIFICATIONS ARE SUBJECT TO CHANGE WITHOUT NOTICE.