



Žižkov Television Tower Prague -
Colmark trade s.r.o.

Control Highlights 2025

www.ecue.com

ecue

ecue

Professional lighting management solutions to create a strong network for the lighting concepts of tomorrow.

COLORFUL ILLUMINATION



GENERAL LIGHTING



DYNAMIC MEDIA



WORLDWIDE PARTNER NETWORK
Together with our global distribution and partner network we master any challenging lighting control project.

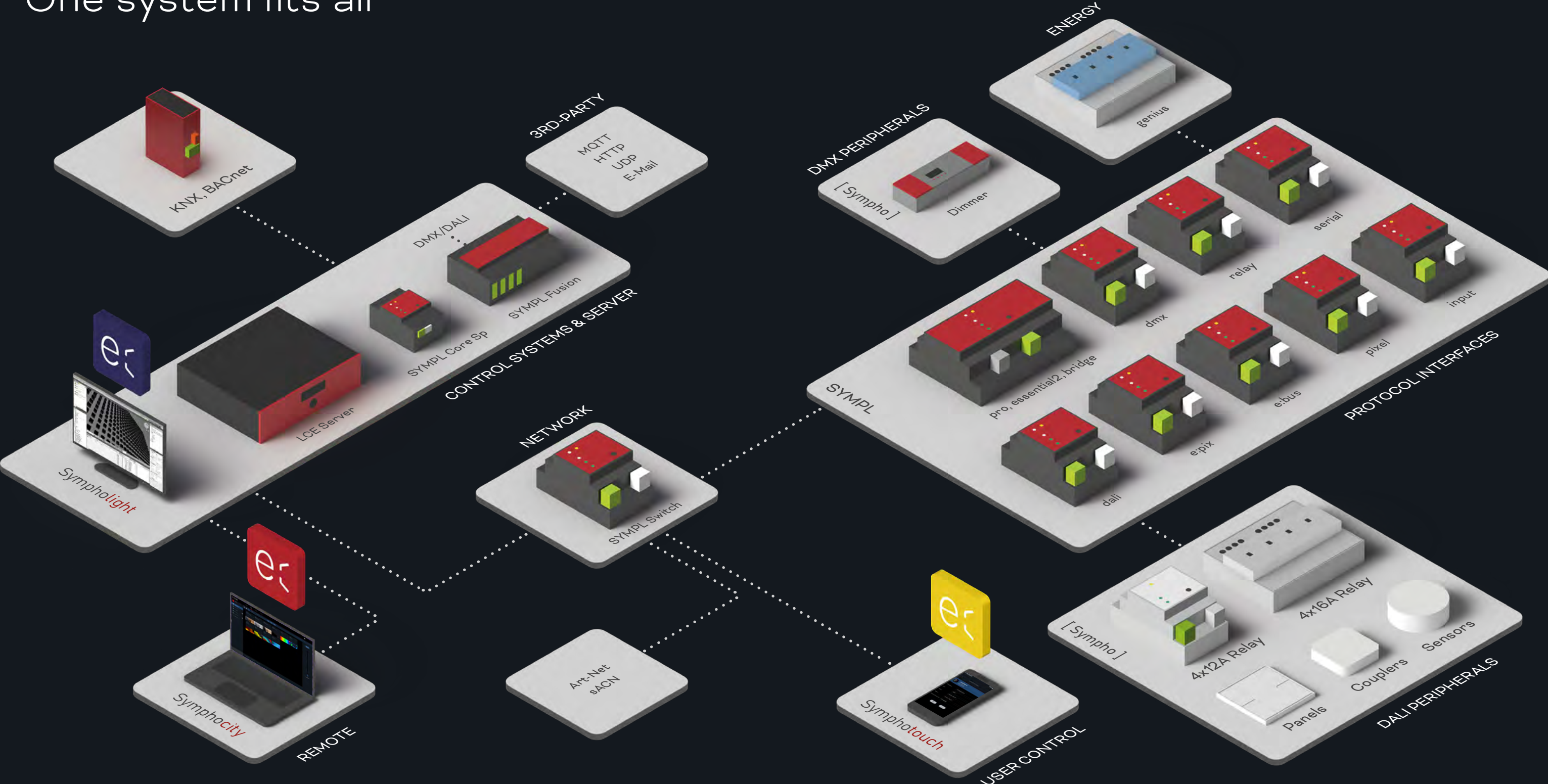
SCALABLE AND RELIABLE
Scalable from a single room installation up to managing entire city-wide lighting infrastructure using one central platform.

EXPERIENCE
For more than 20 years **ecue** stands for trust, experience and customer loyalty like no other brand.



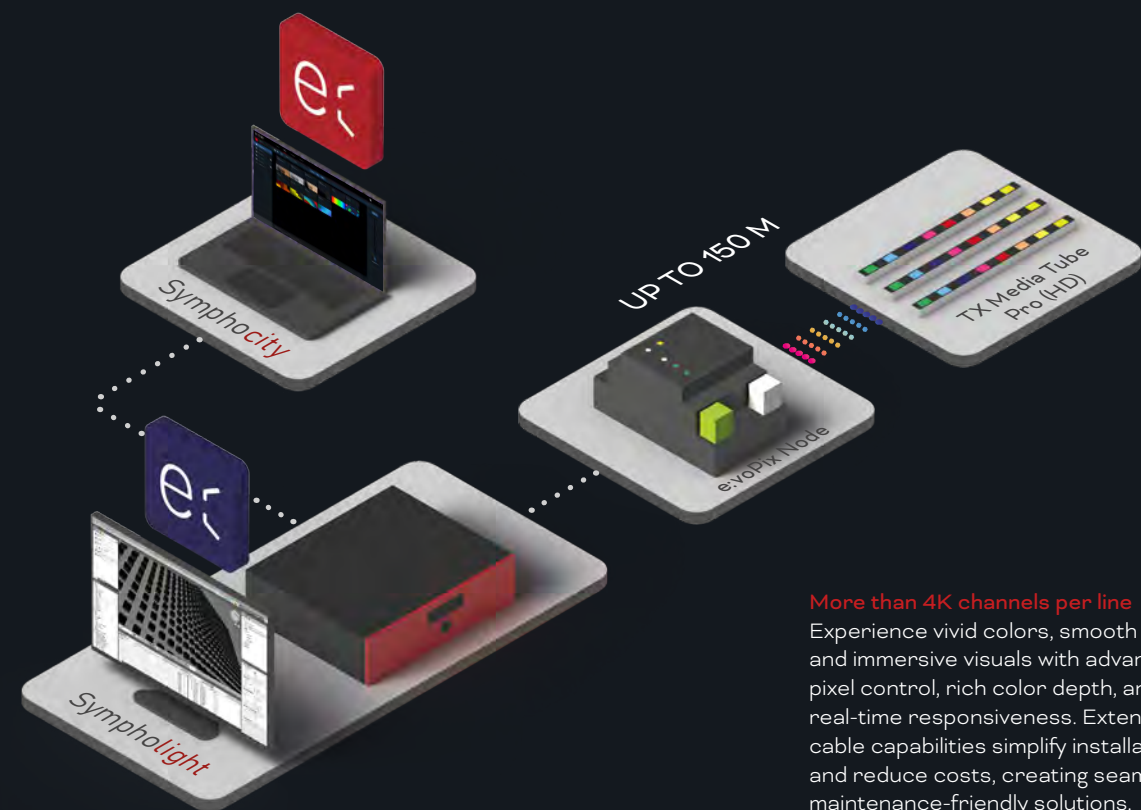
COEX Expo 2020 Arrival Hall,
Dubai, United Arab Emirates

One system fits all



e:voPix NEW

A revolutionary video protocol for professional media applications that redefines the boundaries of control.



More than 4K channels per line
Experience vivid colors, smooth motion, and immersive visuals with advanced pixel control, rich color depth, and real-time responsiveness. Extended cable capabilities simplify installation and reduce costs, creating seamless, maintenance-friendly solutions.

PROFESSIONAL VIDEO FEATURES



Control 1365
rgb pixel with
8bit (1024 16bit)
instead of 170 with
DMX in a single
cable run.



Achieve up to
48-bit color depth
for rich colors
and ultra-smooth
dimming.



A 60 fps
framerate makes
images appear
smoother and
more realistic.



Bidirectional
communication
enables real-time
monitoring for
alerts and faster
maintenance.



Up to 150m cable
runs reduce
cabling and
installation costs.

The **e:cue** lighting control system offers significant advantages in installation, robustness, and longevity. By supporting more fixtures per line, it reduces cabling and material costs, making installations more cost-effective. High-quality, certified components ensure smooth commissioning and long-lasting performance. Integrated test modes enable immediate testing during installation, saving time on software commissioning and content creation. This efficient setup process ensures faster project completion, fewer issues, and a reliable, future-proof solution with minimal maintenance needs.

W Dubai - Dubai,
United Arab Emirates





Server

Perfectly harmonized hardware makes our software a highly reliable solution. Our servers guarantee the perfect mix of performance and reliability. Warranty period of 5 years!



High-class components



Reliability for 24/7 operation



Certified and 5 years warranty



Optimized for the e:cue system

POWERFUL SERVER

Probably one of the most important elements in every project and consequently requires special focus. Our Lighting Control Engines are high performance servers with Sympholight and the Lighting Application Suite (LAS) pre-installed, designed to control small to large and complex projects, 24 hours a day, 365 days a year, without interruption. As the central control units, servers orchestrate all devices and interfaces within a project, providing maximum band width to cover all project requirements - of course flexible and fully scalable.

SYMPL CORE SP

Reliable, cost-effective stand-alone engine for e:cue Sympholight



Max. Pixel¹⁾
5000

Max. DALI Devices¹⁾
256 Ballasts
64 DALI groups (virtual)
42 DALI buttons
42 PIR motion sensors
42 Light sensors

LCE 3 MX

Robust, fanless solution for medium-sized projects



Max. Pixel¹⁾
50.000

Max. DALI Devices¹⁾
512 Ballasts
64 DALI groups (virtual)
84 DALI buttons
84 PIR motion sensors
84 Light sensors

NEW

LCE 4

19-inch high-performance server for large projects



Max. Pixel¹⁾
1.500.000

Max. DALI Devices¹⁾
3072 Ballasts
128 DALI groups (virtual)
168 DALI buttons
168 PIR motion sensors
168 Light sensors

NEW

LCE 4 TURBO

high-end server, 30% more powerful than LCE4, with video capture functionality



Max. Pixel¹⁾
1.500.000

Max. DALI Devices¹⁾
3072 Ballasts
128 DALI groups (virtual)
168 DALI buttons
168 PIR motion sensors
168 Light sensors



sACN

Our systems are provided with Sympholight and LAS licenses by default. These can be upgraded via credits to include open DMX protocols such as Art-Net & sACN per universe. Additional features like single Symphocity boards can be easily upgraded via feature licenses.

¹⁾ Based on project measurements with either DALI or DMX fixtures, not mixed (e.g. 5000 RGB pixel OR 256 DALI ballast). A medium complex Sympholight workflow layout with rare real time calculations (e.g. sensor measurement data) utilizing e:cue output devices like SYMPL or Butler range, Max 2 running video sequences in parallel. Note: High complex project files with many parallel running sequences/cue lists and complex workflows, triggers, logic and scripting scenarios may reduce the quantity of output channel and devices. Please contact your e:cue partner for more details and additional server configurations. We are happy to assist you in choosing the best solution for your project.



SYMPL Fusion

NEW

Modular control system that adapts seamlessly to the needs of general and dynamic lighting projects.



TAILORED TO PROJECT NEEDS

The modular system allows up to 4 DMX or DALI output modules to be freely combined with each other. Further nodes or SYMPL Fusion Devices can be expanded via Ethernet.

MORE SAFETY, LESS COMPLEXITY

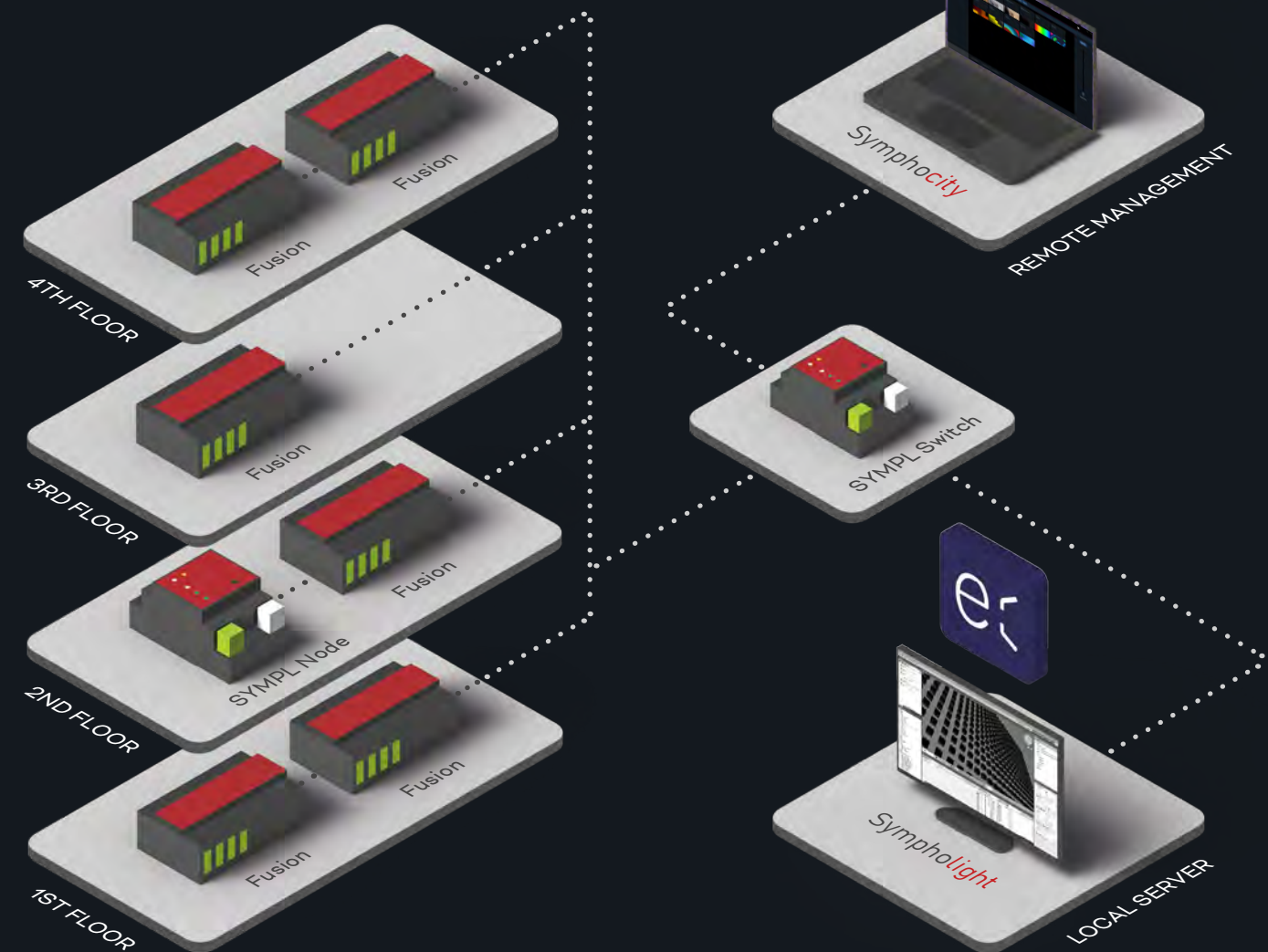
As an independent zone control system, the intelligence is distributed across the entire building. Server, switch, data outputs - all in a single device.

MOST ADVANCED ECOSYSTEM

Runs a full version of Sympholight and provides maximum flexibility in conjunction with the entire SYMPL node system.

SYMPL FUSION

Scalable in the application and in the size of the system.



Versatile application

Small to medium dynamic or functional lighting control projects to large scale with multiple areas such as such as office buildings, factories, ships, amusement parks, shopping centers, advertising, etc.

Fully scalable

Easy commissioning with Sympholight and remote management with Symphocity - whether one or a hundred. The two network connections can be used for daisy chaining to the to the next Fusion / SYMPL or be used independently.

Maximum connectivity

The Fusion comes with DMX and DALI-2 modules as well as digital inputs. Expandable with SYMPL pixel (SPI), relay, serial, dali & dmx. Optional interface Interface to ArtNet, sACN, HTTP, UDP, MQTT, Email, RDM, BACnet & KNX.

Design with confidence

High quality components, freely configurable, realtime clock, NTP interface plus full implementation of DALI-2 incl. input devices DT6, DT8 and and many more features.

Museum of the future

The **e:cue** lighting control system offers lighting designers the perfect balance between functionality and creativity. With its intuitive interface, it enables the seamless integration of dynamic and functional lighting, giving designers full control over complex lighting scenarios. This flexibility allows for the creation of immersive, responsive environments tailored to specific needs. e:cue is an ideal solution for both indoor and outdoor applications, providing a comprehensive, unified control system for any lighting design project. A prime example of e:cue's capabilities is its use at the Museum of the Future in Dubai. Here, the system was key in illuminating intricate Arabic calligraphy on the building's facade, dynamically showcasing quotes by the ruler of Dubai. e:cue's advanced lighting program system allowed for the precise control of each quote's lighting, demonstrating its ability to handle large-scale, creative lighting projects with exceptional precision and flexibility.

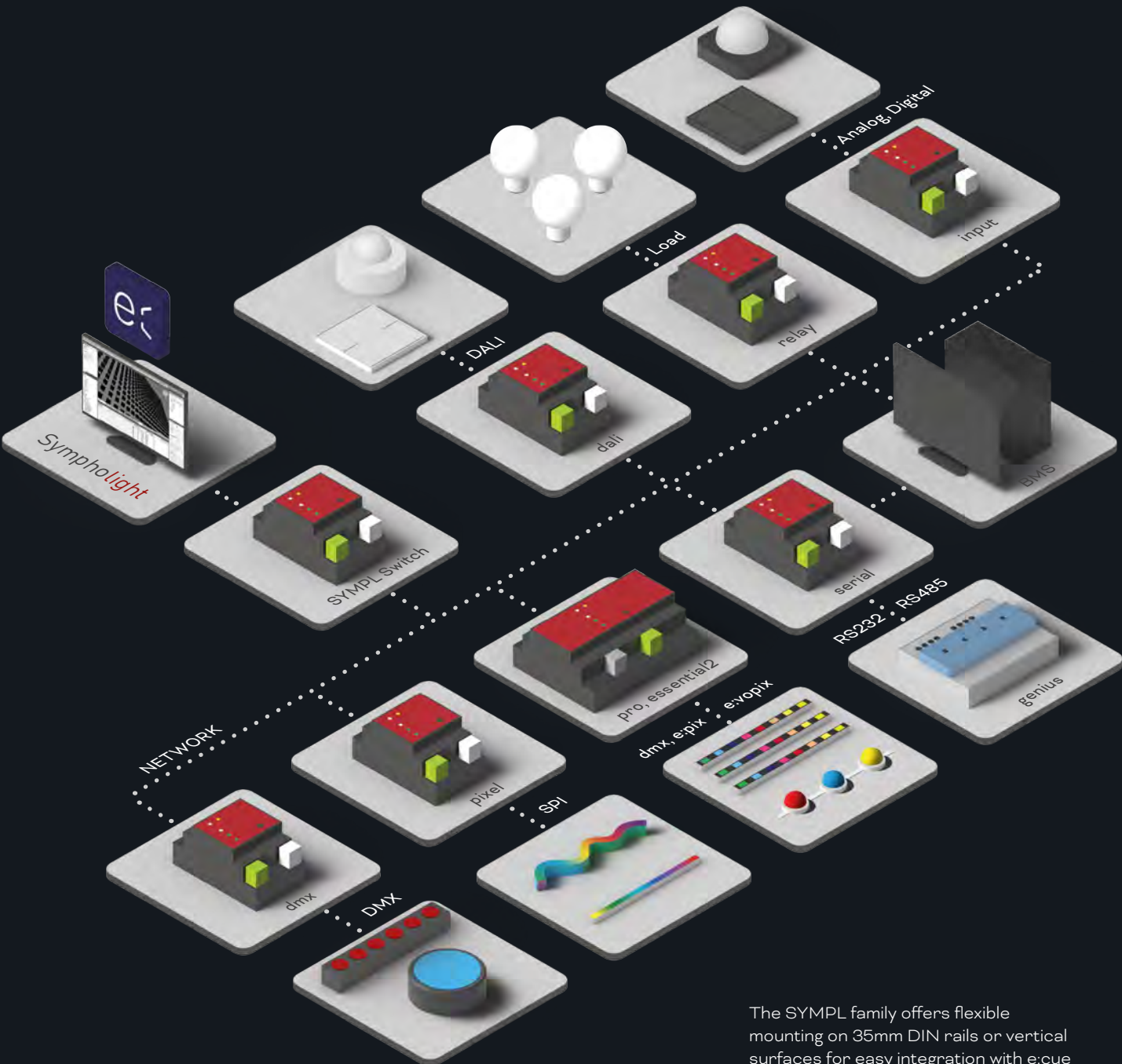
Featured products

Lighting Control Engine 2 MX
SYMPL DMX Node
SYMPL Serial Node

The Museum of the Future in Dubai impresses with a façade of luminous Arabic calligraphy that displays visionary quotations. The dynamic lighting design and illumination of the façade and interior were realised using the innovative control solution from **e:cue**. This creates impressive lighting effects that put the architectural masterpiece in the right light and immerse visitors in a fascinating atmosphere.

SYMPL Protocol Interfaces

Nothing is Left to Chance! Our Interfaces are Designed to Operate Reliably and Smoothly, Suitable for all Common Engineering and Project Requirements.



The SYMPL family offers flexible mounting on 35mm DIN rails or vertical surfaces for easy integration with e:cue Sympholight. It features a web interface for configuration and an integrated test mode for quick checks of connected luminaires.

| Node | Protocol | Ports | Channels | Applications |
|------------------|----------------------------|-------|--------------|--|
| SYMPL dmx | DMX/RDM | 2 | 1024 | Control any type of DMX512 or RDM based luminaire |
| SYMPL e:pix | e:pix | 2 | 4096 | Control all Traxon e:pix based luminaires |
| SYMPL pixel | asynchronous & synchronous | 2 | 4096 | Control multi pixel (SPI) products, e.g. LED Tapes etc. |
| SYMPL dali | DALI | 1 | 64 | Control and interact with DALI Devices |
| SYMPL input | analog & digital | 8 | | Interfacing with analogue inputs or digital I/O's |
| SYMPL serial | RS232 & RS485 | 1 | | Communicate with 3 rd party systems |
| SYMPL relay | | 3 | | Load switching |
| SYMPL Switch | Ethernet | 5 | | Distribute e:net or other ethernet bases signals |
| SYMPL pro | DMX512/RDM or e:pix | 8 | 4096 / 16384 | For use in extreme environments with surge protection & isolated outputs |
| SYMPL essential2 | DMX or FastDMX | 8 | 4096 / 8192 | Featuring fast support for fast DMX chips such as UCS, SUNMOON etc. |
| SYMPL bridge | DMX or e:pix | 8 | 4096 / 16384 | Converts e:net, Art-Net, sACN to DMX512 or e:pix |



24/7 in tough environment

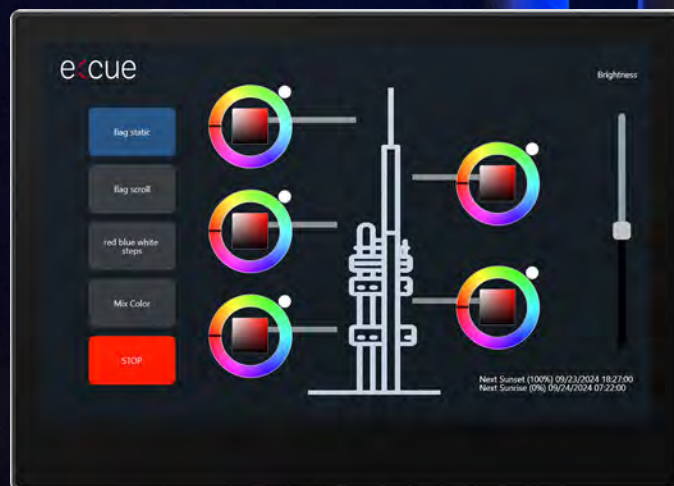


5 years warranty



Easy to commission



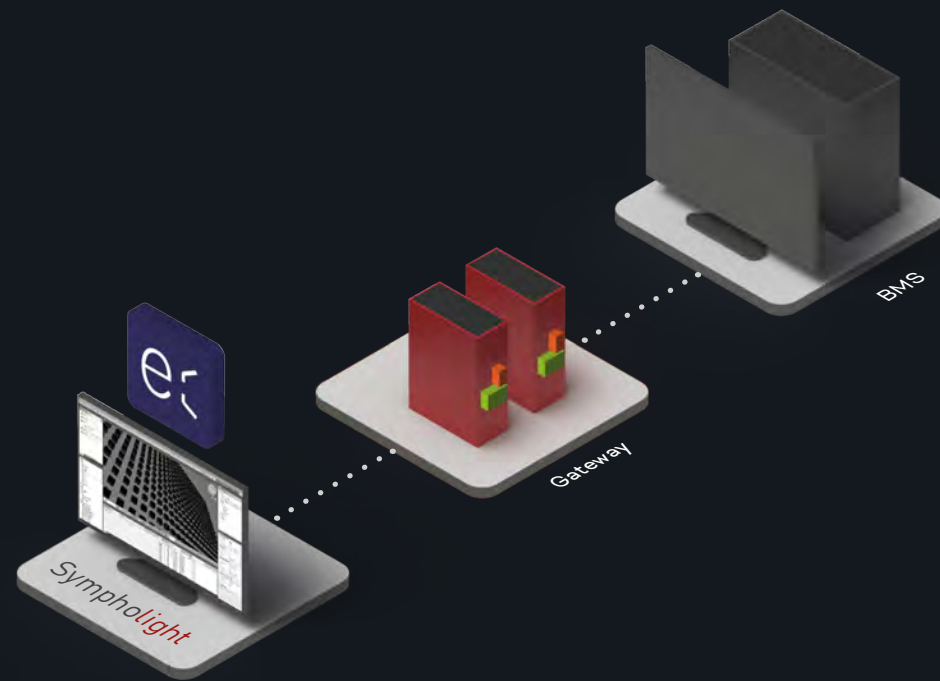


e:cue's dynamic lighting control offers unmatched flexibility and reliability, as demonstrated at the Prague TV Tower. Pre-programmed lighting scenes can be scheduled with precision, ensuring automated and seamless operation. The user-friendly ActionPad interface allows easy adjustments to scenes or colors in individual areas, making it perfect for special events without the need for technical expertise. This cost-effective solution operates 24/7 and automatically restores functionality after a power outage, ensuring uninterrupted performance. e:cue's advanced technology transforms landmarks like the Prague TV Tower into dynamic, visually stunning icons.



Sympholight Gateways

The Sympholight Gateway forms an interface to BACnet or KNX. It converts data from the lighting management system SYMPHOLIGHT into the building management system compliant format.



The SYMPHOLIGHT Gateway BACnet converts SYMPHOLIGHT's MQTT data to BACnet, facilitating integration with building management systems. It forwards various data types, including brightness, color, sensor, energy, and luminaire information (RDM, DALI), with options for 25, 500, or 2500 data points. The gateway supports automation functions such as alarms, trend logging, and scheduling on a per-data point basis, along with system status and failure reporting. Configuration is user-friendly through a web interface, allowing fast Excel imports for large setups. Secure BACnet/SC encrypted transmission is included, along with a SYMPHOLIGHT license for MQTT data transmission.

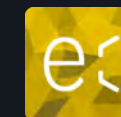


e:touch 8" & 10"

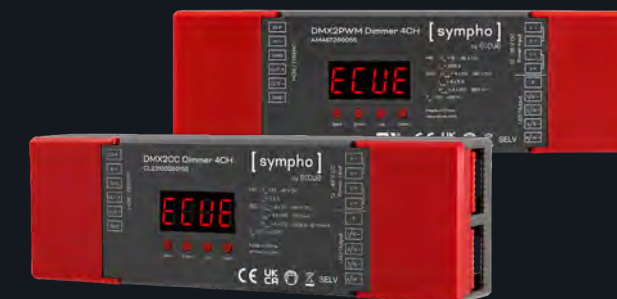
NEW



The new 8" and 10" touch panels offer versatile installation options, with both horizontal and vertical mounting to fit any environment. Through the Symphotouch app, these displays integrate seamlessly with our central lighting control software, Sympholight, and are network-ready, powered conveniently via Power-over-Ethernet (PoE). Their compact design ensures they fit perfectly in any standard flush-mounted box



DMX2PWM & DMX2CC Dimmer



Our new 4-channel CC and PWM dimmers offer flexible power input from 12 to 48 V DC and can be controlled via DMX with RDM functionality. The adjustable dimming curve gamma (0.1 to 9.9) allows precise lighting adjustments, and the DMX input and output are isolated and surge-protected. The PWM dimmer provides smooth, flicker-free dimming with up to 16-bit resolution and a frequency range of 0.5 to 35 kHz, while the CC dimmer supplies constant current from 100 to 700 mA.



ZF Friedrichshafen

The new ZF Friedrichshafen production facility in Shenyang relies on the reliable and resilient control solutions from **e:cue**. Sympholight enables centralized lighting control across production halls, offices, storage areas, and break rooms, with flexible adaptability. Through Symphocity, lighting schedules can be planned in advance, and the entire system is monitored in real-time. With additional energy monitoring and management via e:cue Genius and Symphocity, efficiency is enhanced, and energy consumption remains fully transparent.

The **e:cue** DALI-based lighting control system combines efficiency, flexibility, and precision. Integrated daylight and motion sensors reduce energy consumption by up to 50%. It offers seamless control of individual fixtures and lighting scenes, ensuring optimal conditions for any application. With a user-friendly interface, scalability, and compatibility with DMX lighting, e:cue delivers a versatile and future-proof solution for modern lighting needs.

Featured products

- Lighting Control Engine 3FX
- SYMPL dali Node
- SYMPL serial Node
- SYMPL e:bus Node
- Genius 4CH
- Genius 8CH
- SymphoCity



Genius

Multifunctional Solution for Load Switching, Energy Monitoring and Power Measuring Combined in a Single Device.

SWITCH AND MEASURE ENERGY

The Genius offers real-time monitoring of installations and objects, available in a 4- or 8-channel edition. It features four or eight bistable relay outputs (SPST), each capable of handling a resistive load of up to 20 A at 230 V AC.

The Genius measures a comprehensive range of parameters, including voltage, current, power (active, apparent, reactive), power factor, energy (active), phase, line frequency, and status. With connectivity via Modbus RTU/ASCII, it ensures seamless integration into existing systems.

Designed for versatility, the Genius can be easily mounted on 35 mm DIN rails or flat surfaces, offering flexibility to meet diverse installation needs.



Significantly reduces energy consumption. Energize your system only when needed and protect the equipment



Reduces downtime through fast fault detection - ensure that your project always looks its best



With Symphocity Energy Board, energy data is clearly visualized and historical measured values can be compared with each other



Genius 8 Channel

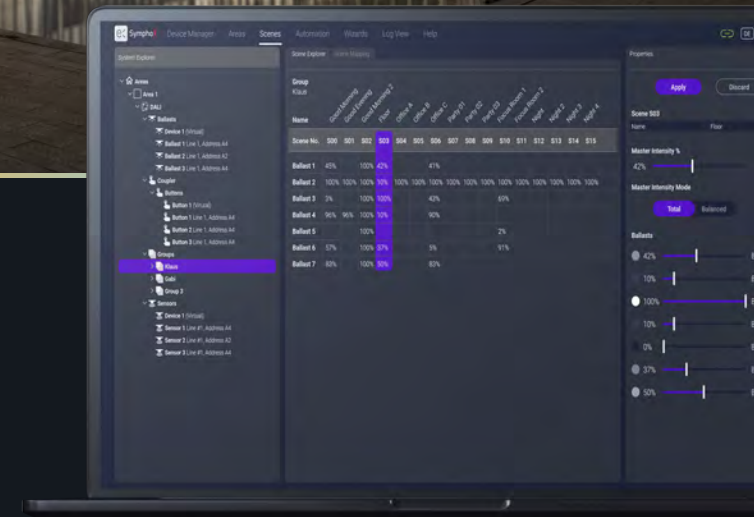


Symphocity Energy Board

COMING SOON



SymphoX



SymphoX is designed to control general lighting for office, education, industry, hospitality, and museum applications.



With a special focus on usability, a versatile multi-platform approach, and a streamlined design, SymphoX simplifies tasks, saves time, and offers comprehensive multi-language support for greater accessibility and efficiency.



Compatible with any available DALI-2 device. The virtual device approach offers maximum flexibility and enables offsite preparation.



DALI Lighting Control

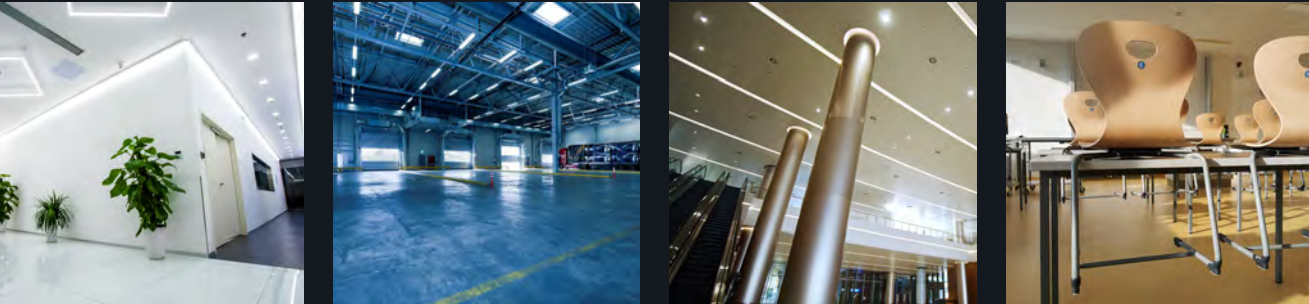
Perfect Lighting in Any Situation

Flexibility
Automation via Sympholight offers endless possibilities. One system fits all – no difference which type of lighting system needs to be controlled.

Scalability
We provide lighting control solutions for everything: from a simple indoor office installation to the light management of an entire city.

Customizable
Endless remote-control possibilities with a maximum of design freedom. Fader, buttons, text and any other control features can be customized and orchestrated in no time at all.

- OFFICE
- INDUSTRY
- MUSEUM AND HOSPITALITY
- EDUCATION



[sympho]

DALI 2

NEW

DALI-2 Peripherals



Panel 4-Key black



Panel 4-Key metal



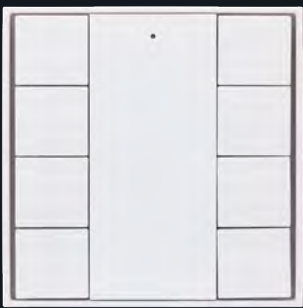
Panel 4-Key white



Panel 8-Key black



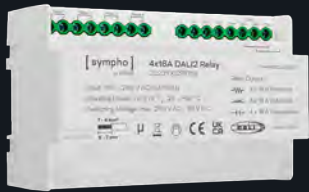
Panel 8-Key metal



Panel 8-Key white



Push Button Coupler



4x16A Relay



4x12A Relay



Multi Sensor HF



Multi Sensor LS/MD





Halored implemented a cutting-edge lighting solution with the **e:cue** Sympholight system, managing over 8000 DALI luminaires, including 150 custom Dome fixtures with variable color temperature. The system dynamically adjusts lighting based on movement, natural light, and energy costs, enhancing efficiency and comfort. Smart features like fault notifications and energy analysis streamline maintenance. This solution elevates the shopping experience by blending aesthetics with innovative technology.



Lippulaiva

Finland - Halored

The Lippulaiva shopping center, opened in 2022 in Suur-Espoonlahti and owned by Citycon OY, has quickly become a key hub for the local community. With nearly 100 shops, restaurants, and services, including one of the largest grocery store concentrations in Helsinki, Lippulaiva sets new standards in convenience. Its inviting atmosphere and diverse offerings make it a standout destination in the region.



Central monitoring



Daylight harvesting



Human centric control



Local manual control



Presence detection



Scheduled control



„Demand-based lighting created by presence and daylight sensors ensures high brightness levels for safety and convenience, still saving significant energy by intelligent control of luminaires.“



Mari Laaksonen
Director Asset Management
Lippulaiva shopping center

„Through e:cue’s state-of-the-art light management solution provided by Halored, we can be in control of our CO₂ emissions and electrical consumptions, having light where we need it and providing a bright shopping center experience.“

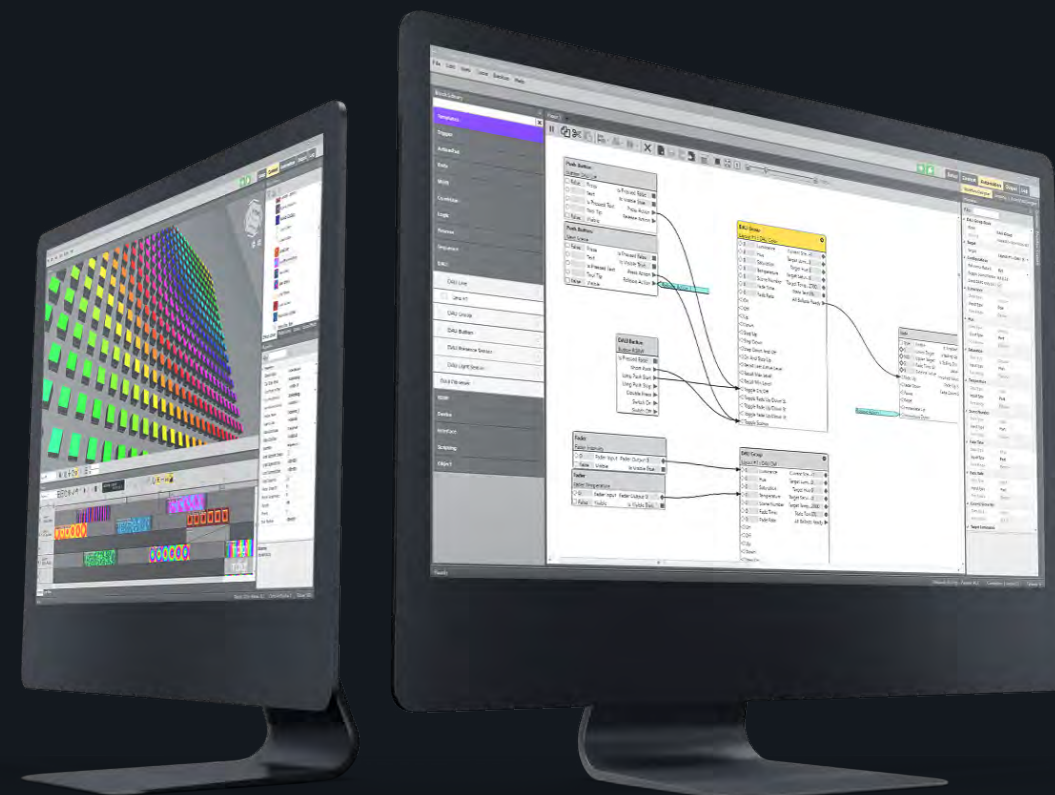
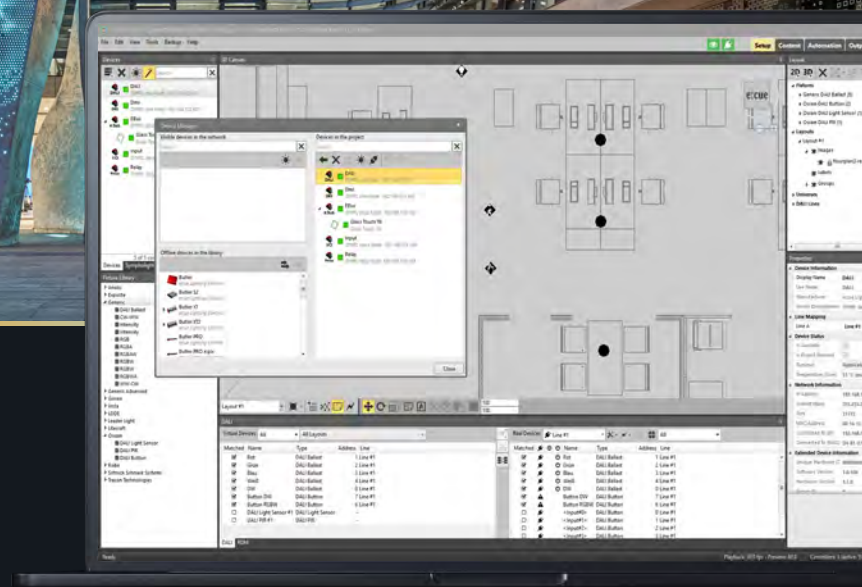


Risto Seppo
Business Development Director
Lippulaiva shopping center

Featured products
Lighting Control Engine 3+
SYMPL DALI Node
Symphocity



Sympholight



The visual programming in the Workflow Designer allows infinite possibilities to create intelligent logical systems. It is the most efficient way to connect everything to anything. The API opens a standard way to communicate with third party systems. Networking via an API allows the 3rd party system to start, stop, monitor changes, display warnings, or make changes to the content in one or more instances, among many other things.

The ultimate solution to manage and control any type of lighting project.

e:cue Sympholight is a software that offers flexible and scalable solutions for various project requirements. Traxon e:cue combines many years of experience in lighting control with the latest technology and extensive design possibilities. Sympholight simplifies the programming and handling of lighting applications for designers, system integrators and end users.



Scalable from small to big



Endless interfacing options



One Software fits all

COLORFUL ILLUMINATION CTRL.

Select pre-built effects from the library or create your own powerful effects. Create stunning layered effects with multiple blend modes.

DYNAMIC MEDIA CONTROL

Drag & Drop, Fade in & out, create cues and jump within trigger points. Create and manage content on the timeline.

GENERAL LIGHTING CONTROL

Easy handling of DALI, both DT6 and DT8. Single color, DW, RGB, RGBW. DALI version 2 devices (input devices and ballasts) are certainly supported as well!

Supported protocols and interfaces: Analog/Digital, Art-Net, BACnet, DALI, DALI-2, DMX512, e:bus, e:net, e:pix, e-Mail, HTTP(s), IR, KNX, Modbus, MQTT, PIXEL (SPI), RDM, RDMnet, Relais, REST, RS232, RS485, sACN, UDP



Sympho**city**

Symphocity is your main hub to control and monitor projects.

Symphocity provides a comprehensive platform, that gives you control and monitoring capabilities across all your lighting systems and their lighting infrastructure. The Status Overview allows facility managers to gain access to an intuitive overview of the performance and status of the city lighting infrastructure. This allows predictive maintenance before problems occur. The show must go on, and you are in control!



No Cloud usage. Secure in your IT infrastructure.



Customized interfaces for easy access, tailored for maintenance teams, building owners, and marketing departments.



Manage one or multiple sites with different access levels. No permanent connection required.

OBSERVE SYSTEM

Efficiently manage your Sympholight systems and monitor connected output devices. Gain direct access to various web-based user interfaces for seamless control.

SCHEDULE CONTENT

Set start and end dates for your content, with support for both single and multi-site projects. Manage one-time or recurring events with ease.

MONITOR FIXTURES

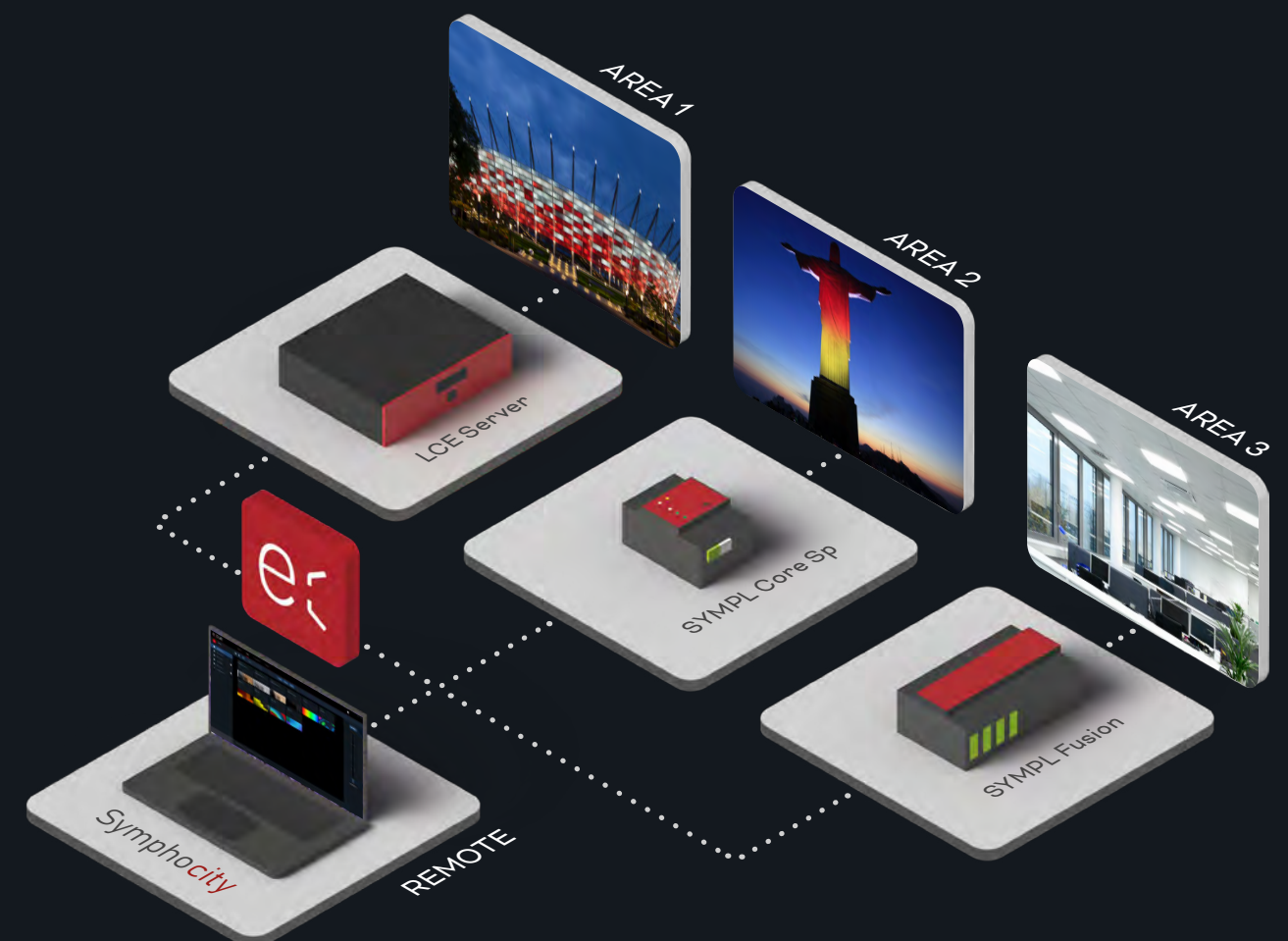
Monitor the status of RDM fixtures, detect damaged units, and identify irregularities efficiently.

MANAGE CONTENT

Gain direct access to all light sequences and colors. Utilize Stop All and Grandmaster functionality for central control of multiple Sympholight systems.

MANAGE ENERGY

Monitor live energy data or compare it with historical records. Measure electricity usage, manage consumption, and detect irregularities effectively.





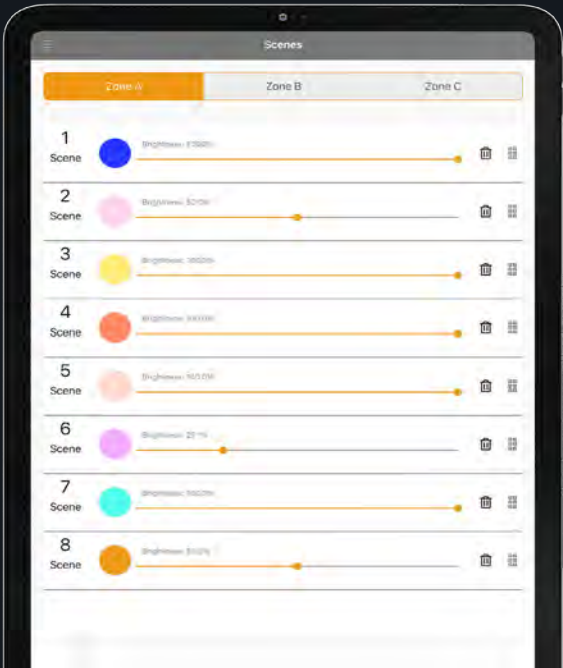
LIGHTDRIVE+ Wifi

The LIGHTDRIVE+ WiFi standalone DMX controller with its integrated wireless connectivity and app management lifts the control of small to medium sized projects on a completely new level.

FEATURES & BENEFITS

The LIGHTDRIVE+ combines all control features in a single device, supporting monochrome, dynamic white, RGB, and RGBW fixtures. It offers two DMX outputs divided into three zones, each with eight customizable scenes. Featuring an integrated scheduler for time-triggered events and pre-defined FX effects, the controller enhances lighting versatility. Easy commissioning is achieved through a free app, while an integrated proximity sensor and input options (2 low-side switches and 2 dry inputs) allow seamless integration with third-party systems.

LIGHTDRIVE+ WIFI APP



Control Portfolio

| | |
|---------------|-------------------------------|
| Server | |
| AM430280035 | SYMPL Core Sp |
| CL24100603935 | SYMPL Fusion |
| AS086160055 | Lighting Control Engine 3 MX |
| CL23100146835 | Lighting Control Engine 3+ |
| CL23100146935 | Lighting Control Engine 3+ FX |

| | |
|---|---|
| Protocol Interface & Network | |
| CL24100604135 | SYMPL Fusion DMX512 / RDM Module (1 channel) |
| CL24100604235 | SYMPL Fusion DMX512 / RDM Module (2 channels) |
| CL24100604035 | SYMPL Fusion DALI2 Module |
| AM356960031 | e:cue Bridge8 (8x Art-Net/sACN to DMX) |
| AA628600035 | Butler PRO DMX/RDM |
| AA628610035 | Butler PRO e:pix |
| AM356970031 | SYMPL bridge Node |
| AB444230035 | SYMPL dali Node |
| AB444180035 | SYMPL dmx Node |
| AB444210035 | SYMPL e:bus Node |
| AB443930035 | SYMPL e:pix Node |
| AM466930031 | SYMPL essential2 Node |
| AB444200035 | SYMPL input Node |
| AM390290035 | SYMPL pixel Node |
| AM394020035 | Pixel Range Extender (2 pcs.) |
| AM255360031 | SYMPL pro Node |
| AM305690031 | SYMPL pro Node e:pix |
| AB444190035 | SYMPL relay Node |
| AB444220035 | SYMPL serial Node |
| AM313830035 | SYMPL Switch (PoE, 5 ports) |
| AM476240031 | SYMPHOLIGHT Gateway BACnet (500 data points) |
| AM476270031 | SYMPHOLIGHT Gateway KNX (500 data points) |

| | |
|---------------|--------------------|
| Energy | |
| AM467260055 | DMX2PWM Dimmer 4CH |
| CL23100280155 | DMX2CC Dimmer 4CH |
| AM382130031 | Genius 4CH |
| AM382140031 | Genius 8CH |
| CL23100278855 | 4x12A DALI2 Relay |
| CL23100278855 | 4x16A DALI2 Relay |

| | |
|-----------------|--|
| Software | |
| AB325300031 | Sympholight |
| 104851051400 | Sympholight EDMX Credit (Universe of ArtNet or sACN) |
| 104851052800 | Symphocity Scheduler Credit |
| CS23100060435 | Symphocity Play Board Credit |
| CS23100060635 | Symphocity Energy Board Credit |
| CS23100060835 | Symphocity Fixture Board Credit |

| | |
|--|------------------|
| Wallmount Controller & Touch Interfaces | |
| AM477420038 | Lightdrive+ WiFi |
| CL24100000255 | e:touch 8" |
| CL24100001455 | e:touch 10" |

| | |
|---|---------------------------|
| Sensor, Coupler & Buttonstations | |
| CL23100279855 | DALI2 Multi Sensor HF |
| AM466320055 | DALI2 Multi Sensor LS/MD |
| AM466330055 | DALI2 Push-Button Coupler |
| CL23100279055 | DALI2 Panel 4-key Metal |
| CL23100279255 | DALI2 Panel 4-key White |
| CL23100279455 | DALI2 Panel 4-key Black |
| CL23100279155 | DALI2 Panel 8-key Metal |
| CL23100279355 | DALI2 Panel 8-key White |
| CL23100279555 | DALI2 Panel 8-key Black |

How can we help you?

Technical Support

support@traxon-ecue.com

General Information

europe@traxon-ecue.com

Follow us on Social Media



Traxon Technologies Europe GmbH

Karl-Schurz-Str. 38
33100 Paderborn, Germany
+49 5251 54648-0
europe@traxon-ecue.com

Specifications are subject to change without notice. Errors and omission excepted.

